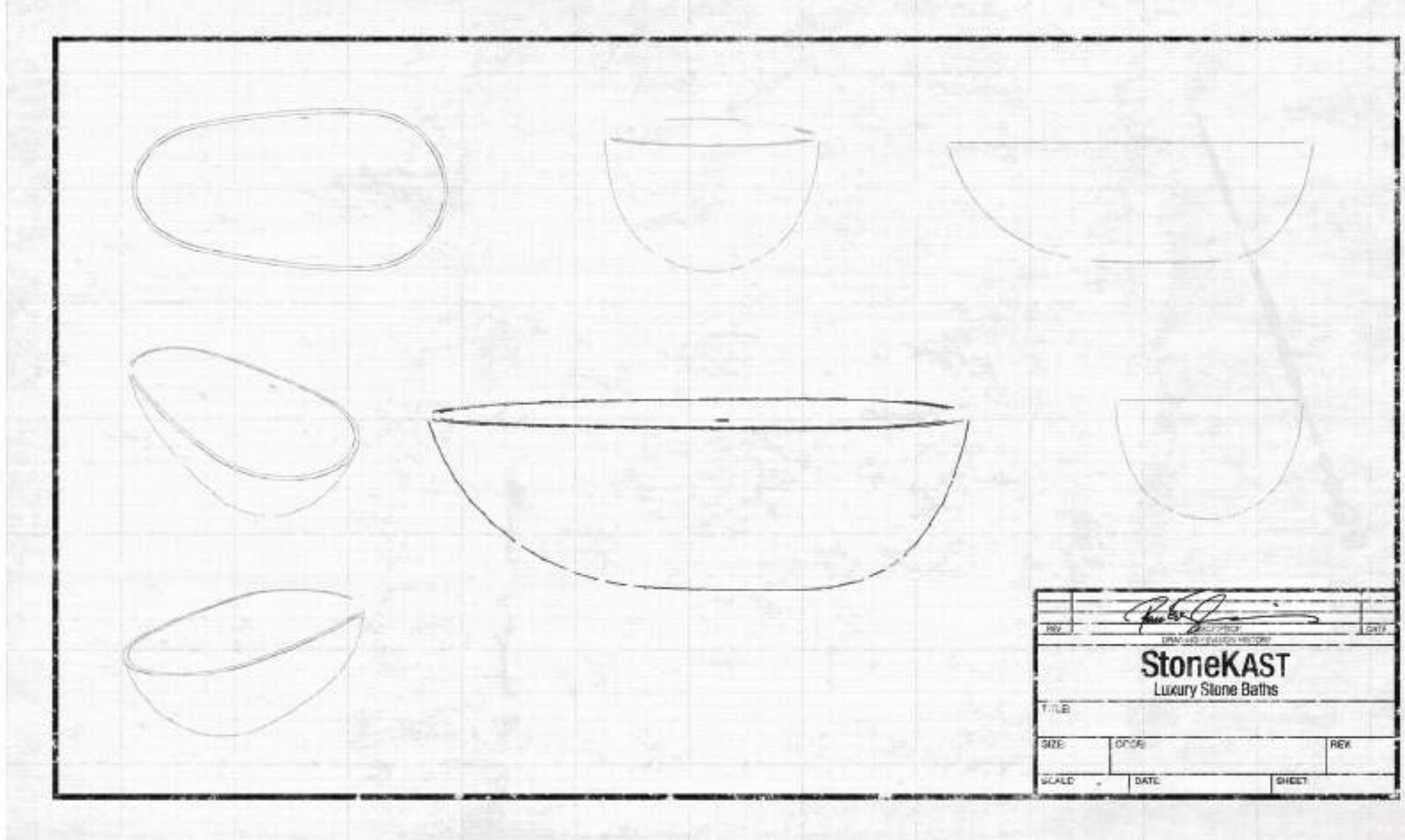


StoneKAST

Luxury Stone Baths







StoneKAST Philosophy

Our motive to create the perfect bath has resulted in what we feel to be the embodiment of our beliefs in the form of eight modern bathing classics.

A reinvention of the luxury bathing concept, resulting in a timeless yet cutting edge centre piece to the modern bathroom, with matching basins to complete the look.

The geometric splendour, the spiritual tranquillity, the overwhelming ambience of a StoneKAST bath fulfils the desire of woman and man alike, creating a personal sanctuary where one can rediscover their inner self.



Creation

StoneKAST uses a unique technique combined with the highest quality raw materials and eco friendly manufacturing conditions to create its distinctive range of exclusive baths.



1. Grading Raw Materials

StoneKAST baths are constructed from limestone, which is first processed to remove any impurities. A fine mesh, along with extremely powerful magnets, is used to remove any contaminants and leave only the highest grade of limestone.

2. Mixing

The next step is to blend the limestone with a high-grade resin compound to create the patented StoneKAST material. This mixture is then subjected to a high vacuum environment, which removes any unwanted air bubbles.

3. Catalyst / Casting

Once out of the vacuum, a catalyst is added to the mixture to begin the hardening process before it is poured into a closed mould. A temperature-controlled environment allows the mixture to cure before the top half of the mould is removed mechanically. The bath is now in the Green State, ready for post curing.

4. Waste and Overflow

At this point the bath is removed from the mould so that the waste and overflow outlets can be drilled using diamond tipped hole saws.

5. Post Curing

With the bottom half of the mould still attached to the bath, to prevent any twisting or warping during the process, the bath is hung by the rim and passed through a tunnel oven for three hours. The heat from the oven fully hardens the limestone and resin mixture to the shape of the mould ready for its final stages of preparation.

6. Quality Assurance Procedures

In the penultimate stage, the surface is inspected for defects and the bath is thoroughly tested to ensure there is uniform thickness throughout.

7. Polishing

Following the Quality Assurance inspection each bath is cleaned and polished to an extremely high standard.



The Collection:



Ovale 10



Geo 18



Cocoon 26



Pebble 34



Oasis 42



Classic 50

Mini Collection:



Petite 60



Quadrato 68



Ovale Mini 76



Pebble Mini 80

Uni Collection:



Uni Basin 84



Uni WC 85

Colour Service:



Dare2Design + Colour 90

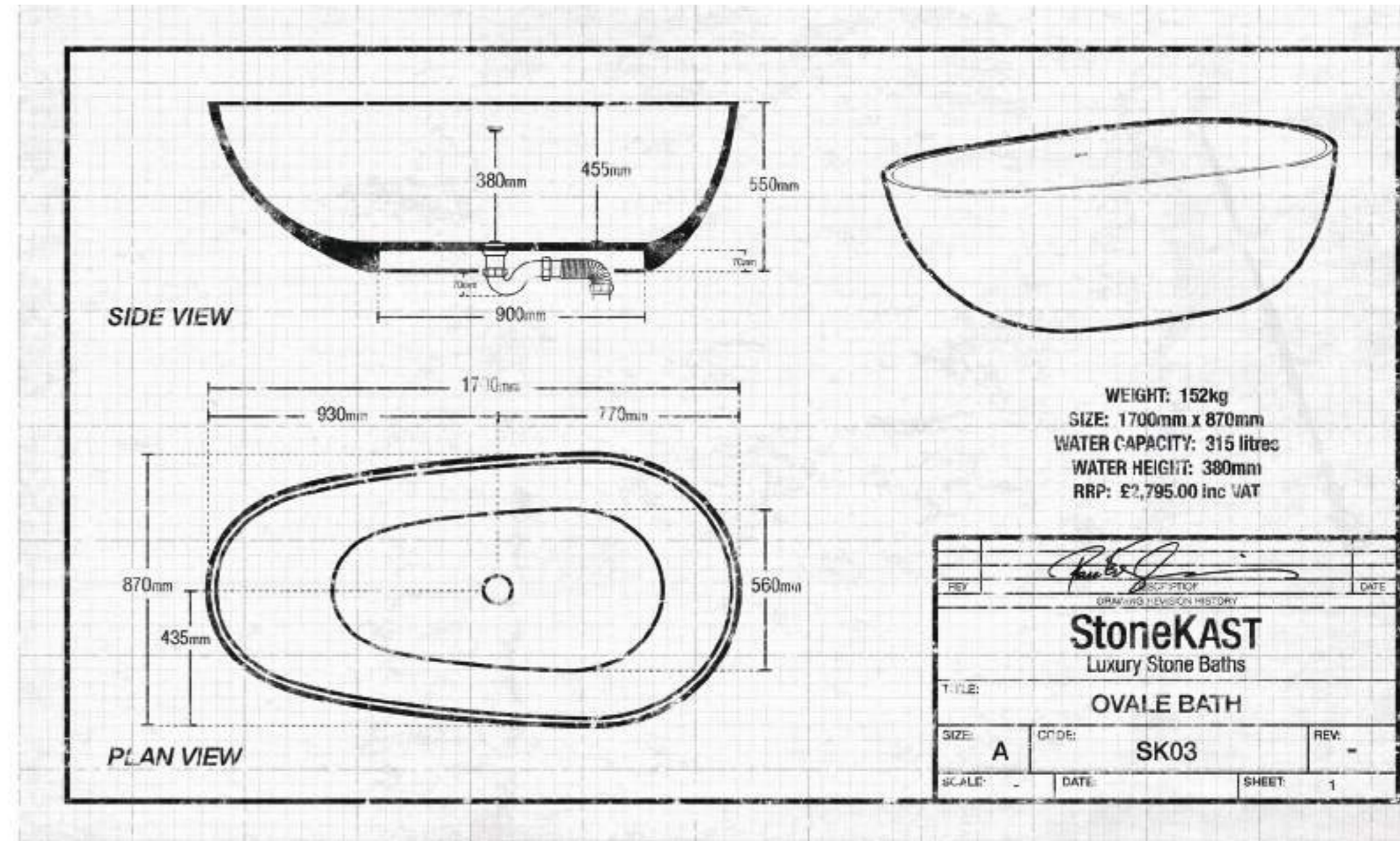


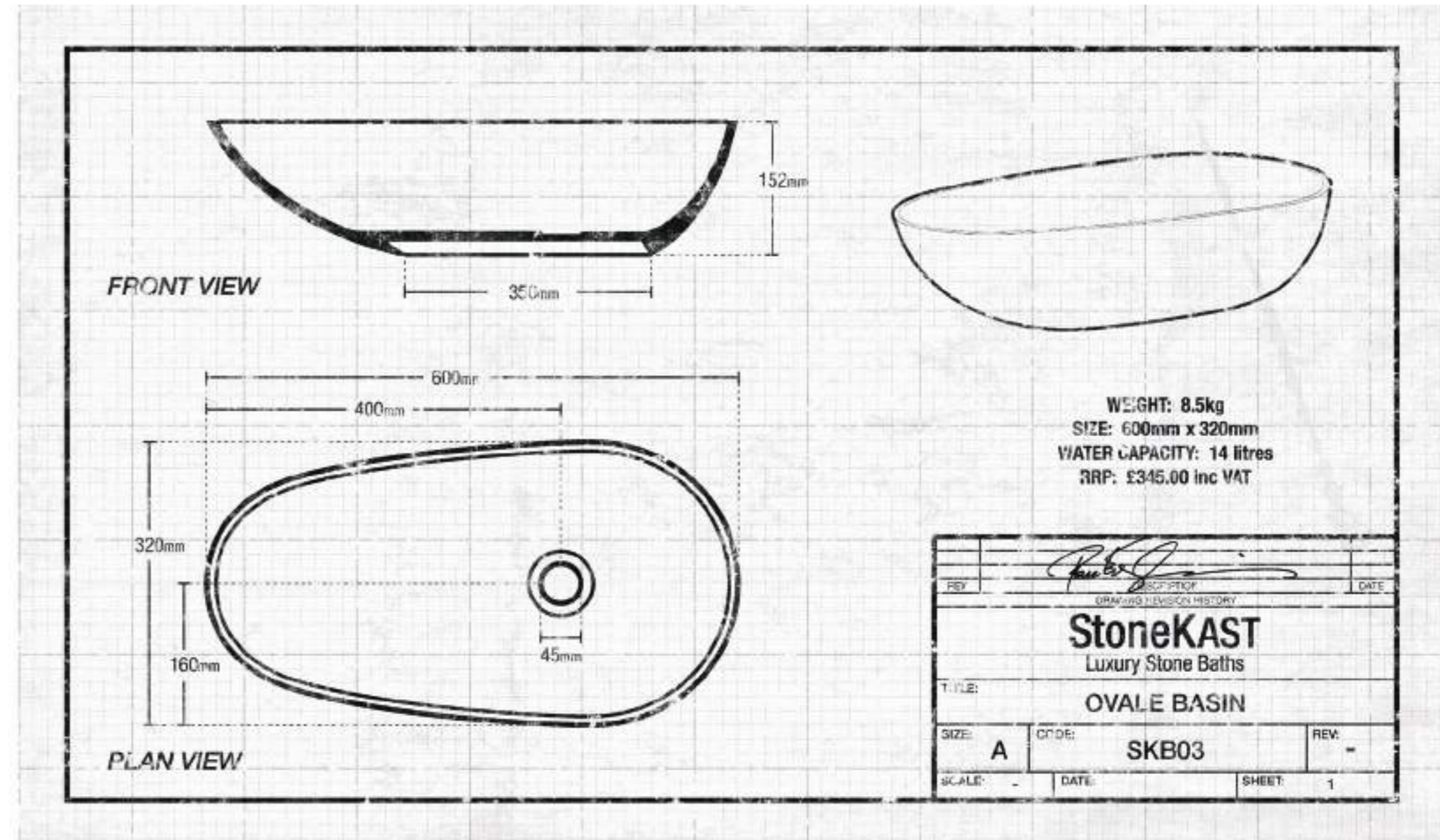
Ovale





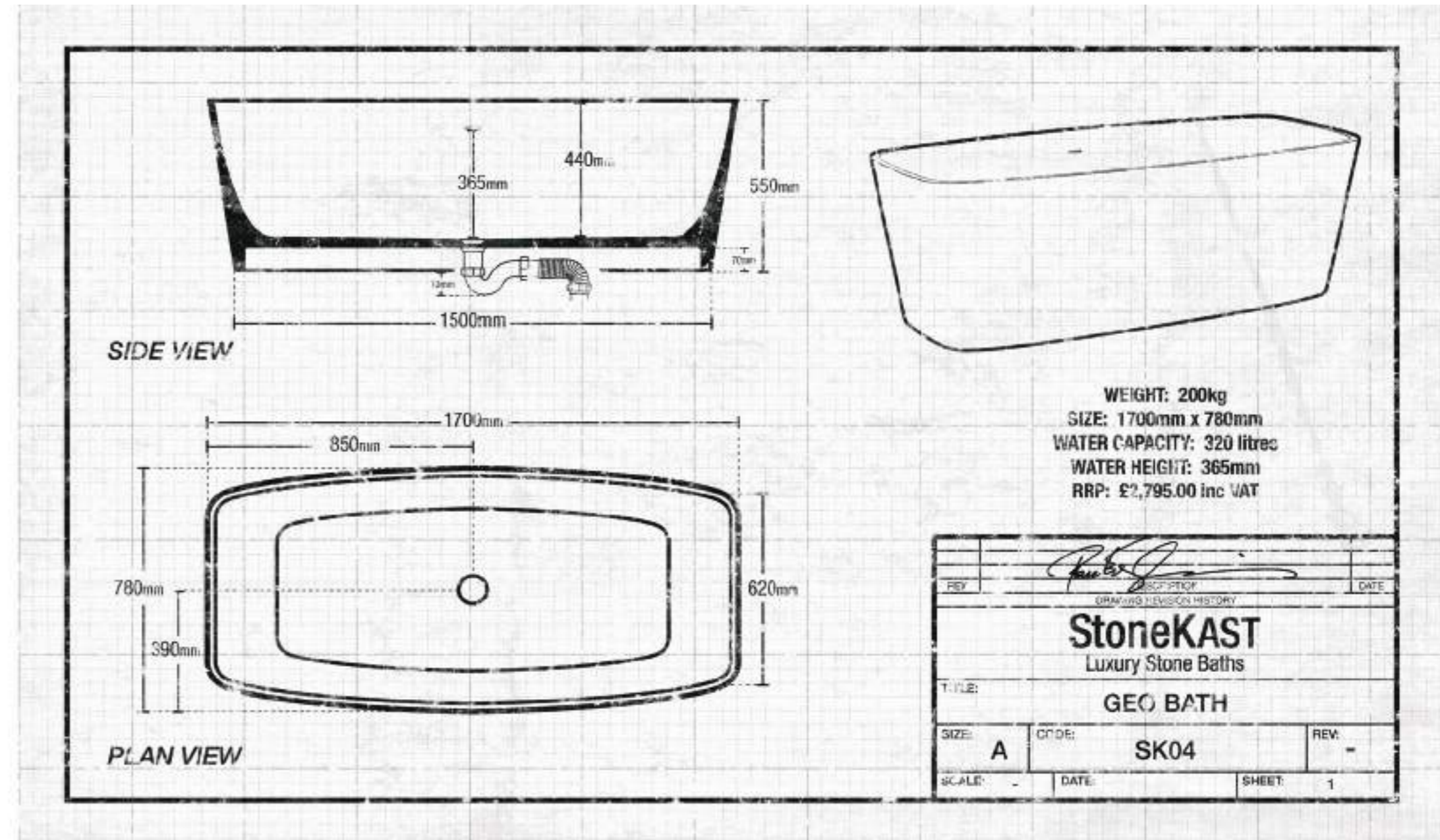
Dare2Design + Colour Go to page 90 to find out more





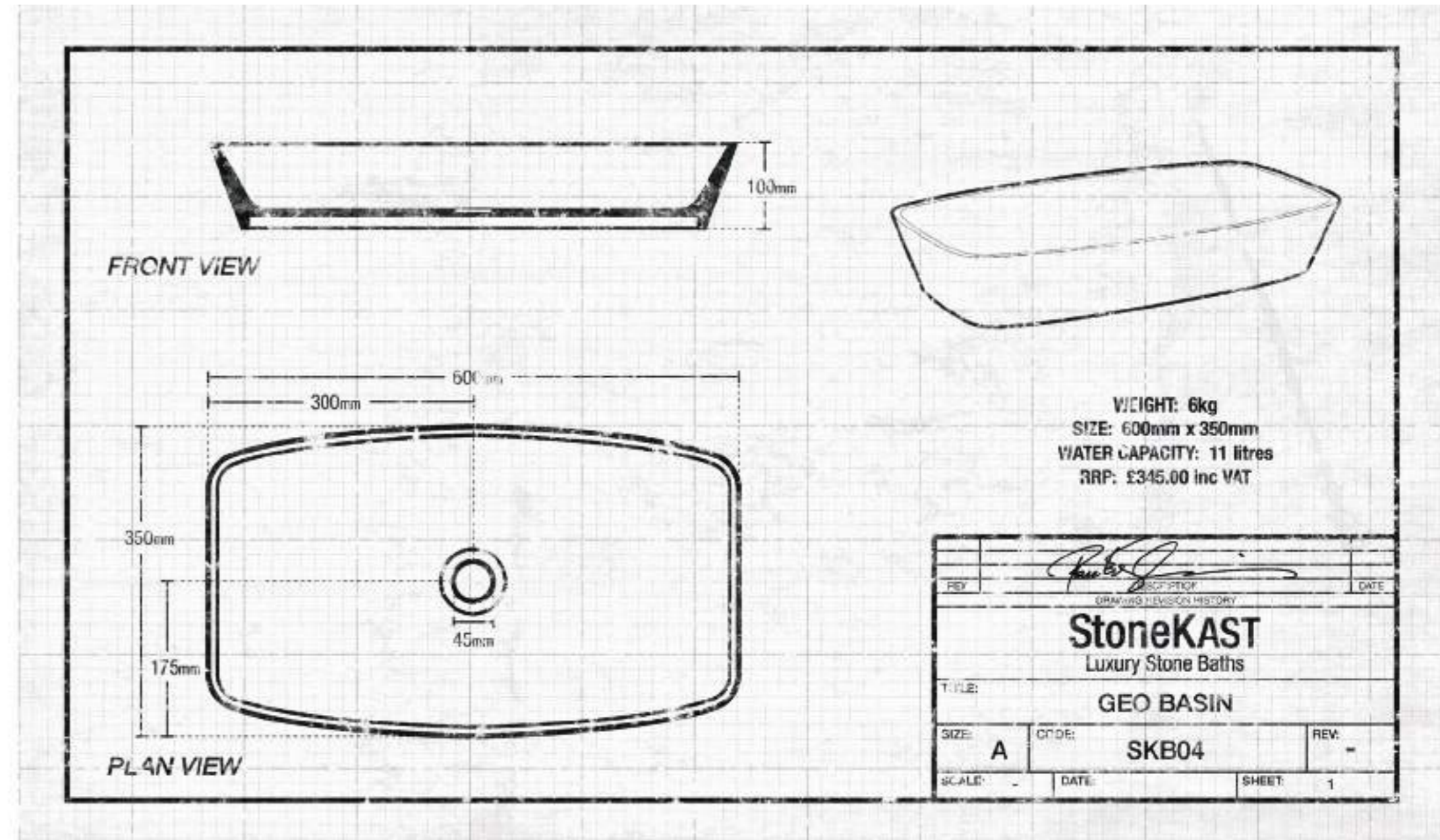








Dare2Design + Colour Go to page 90 to find out more

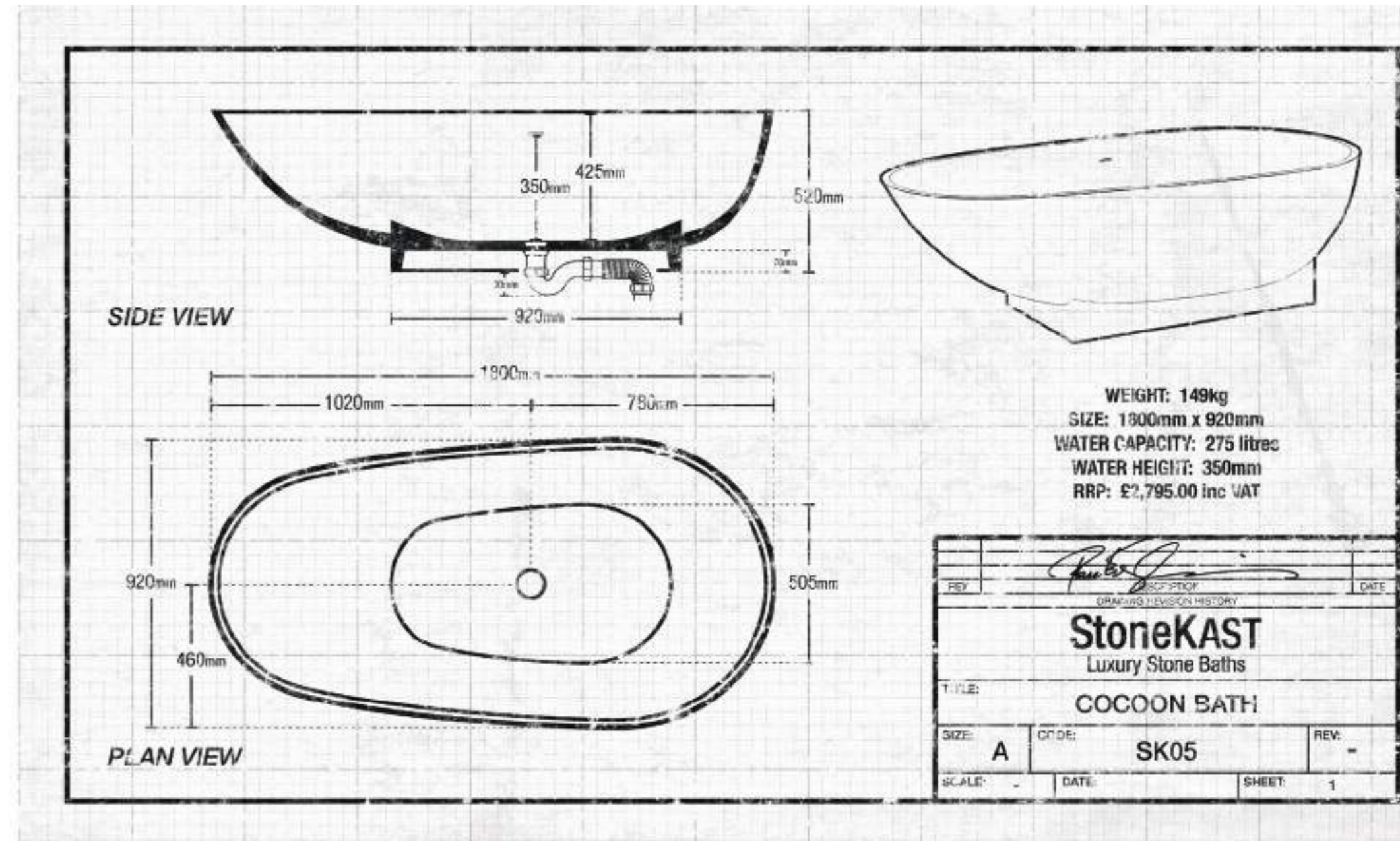






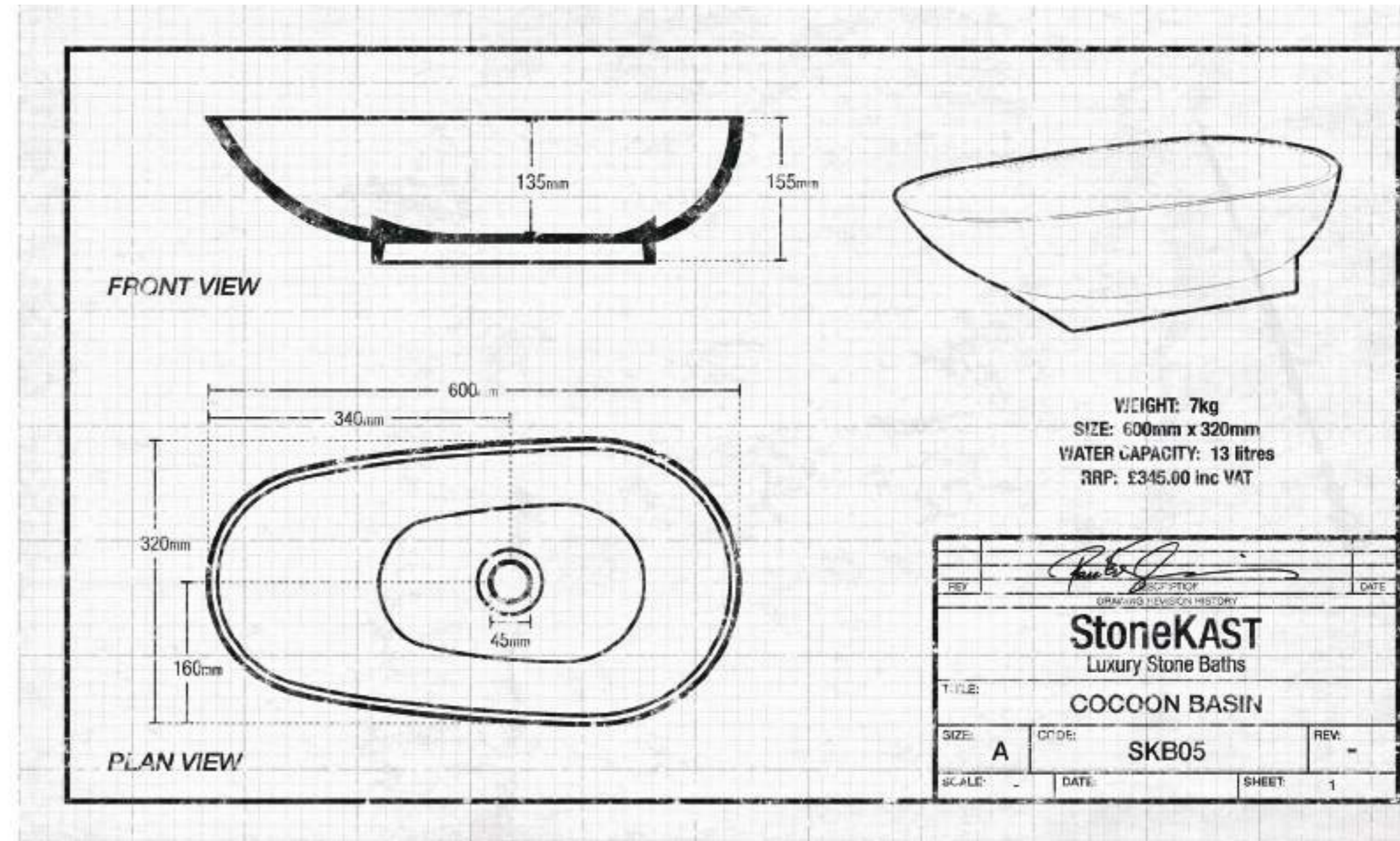


Dare2Design + Colour Go to page 90 to find out more



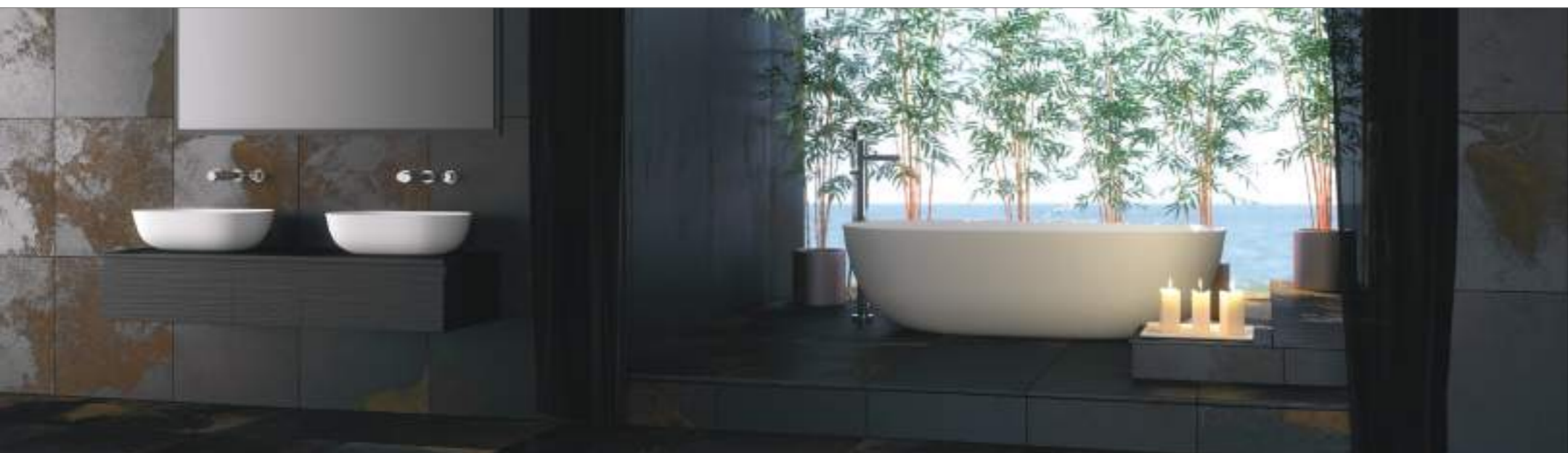


Dare2Design + Colour Go to page 90 to find out more



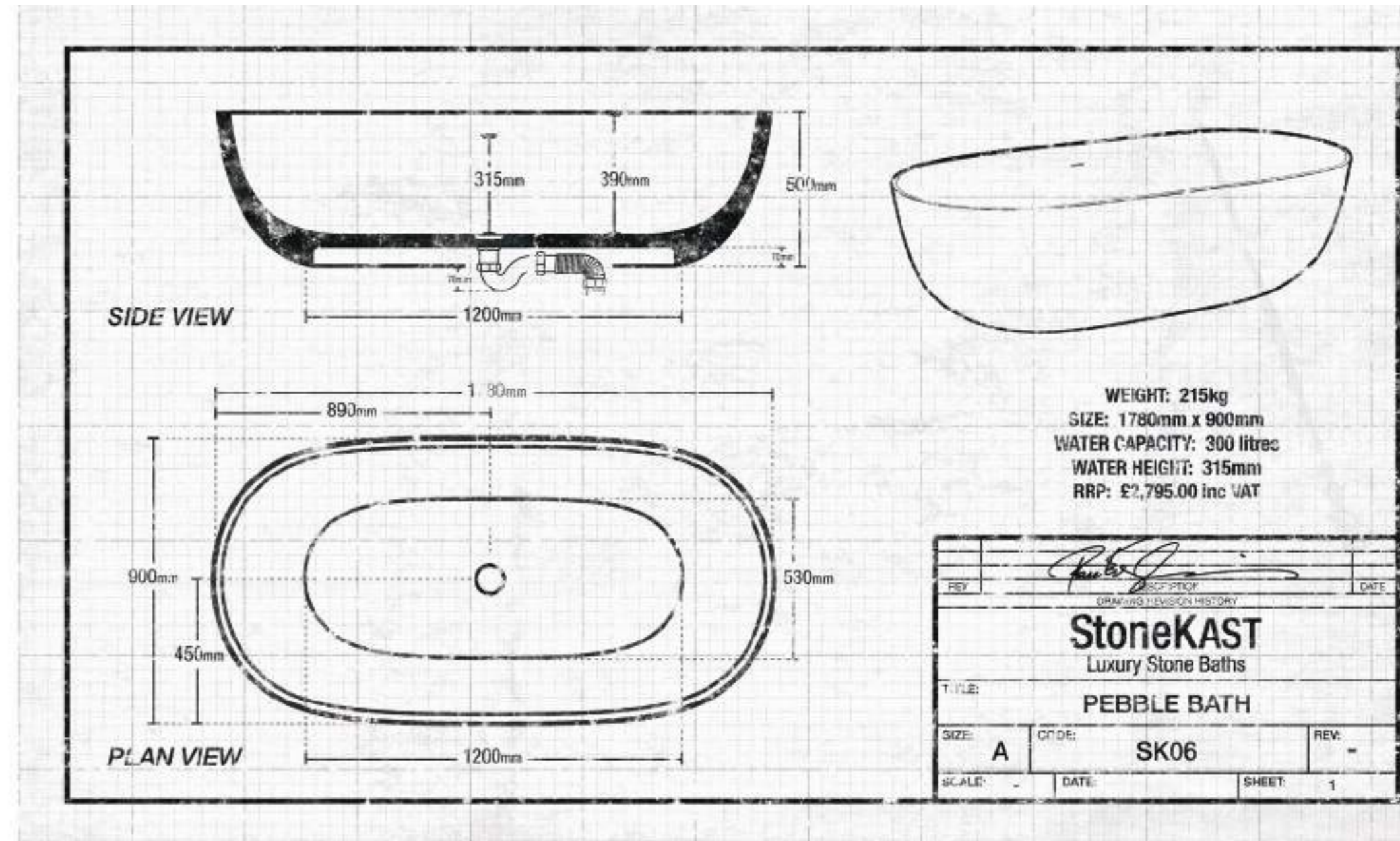


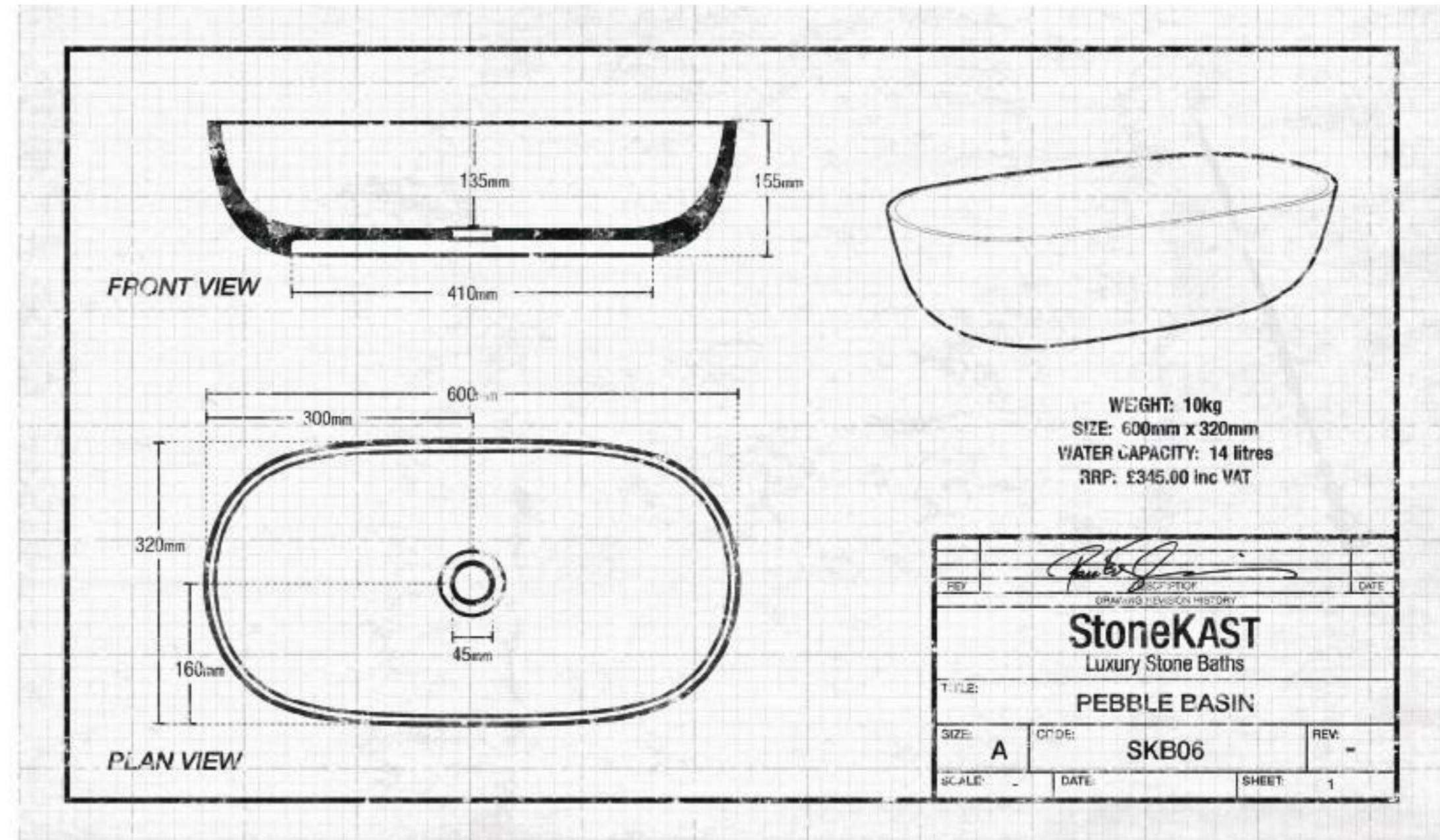
Pebble





Dare2Design + Colour Go to page 90 to find out more





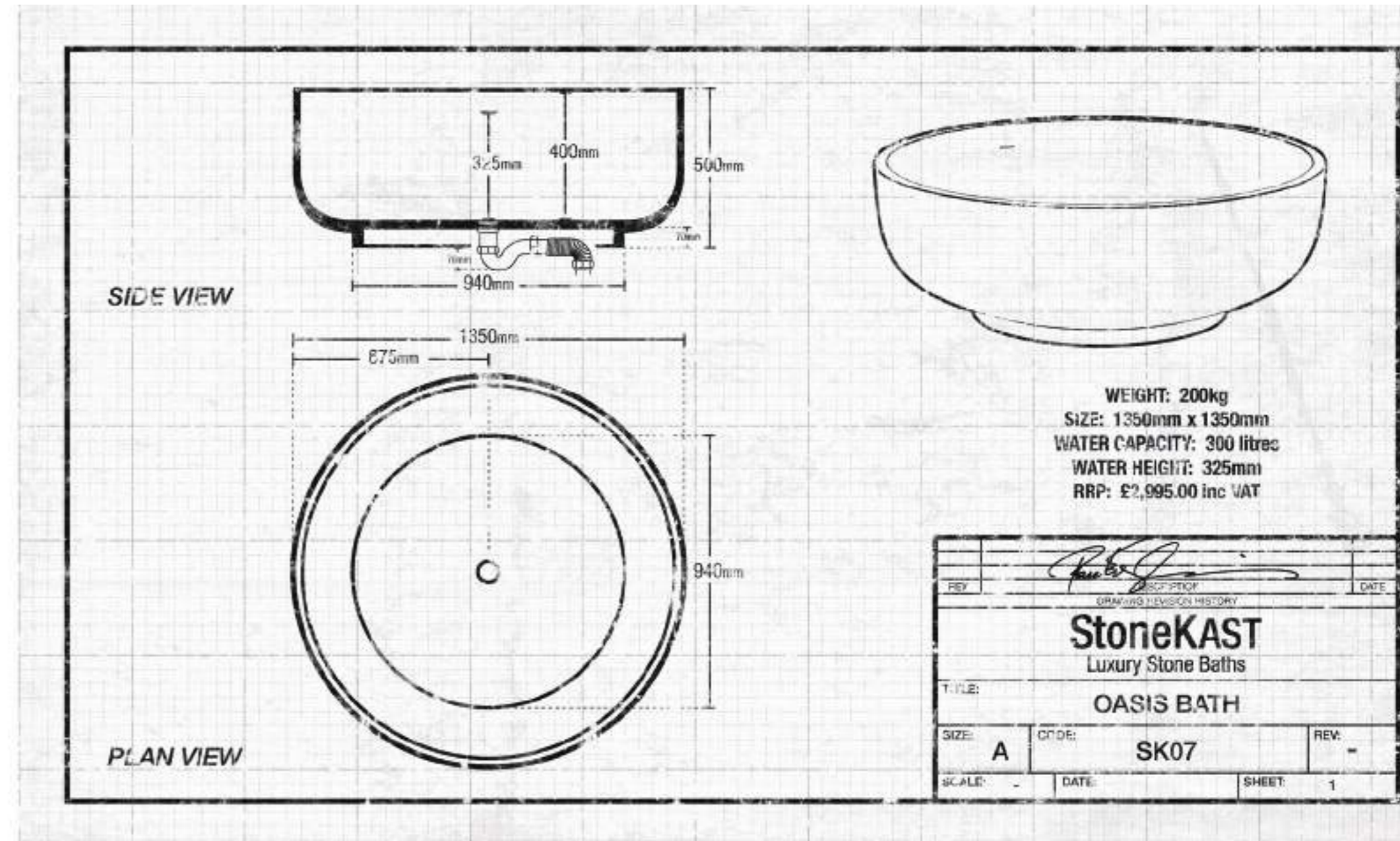


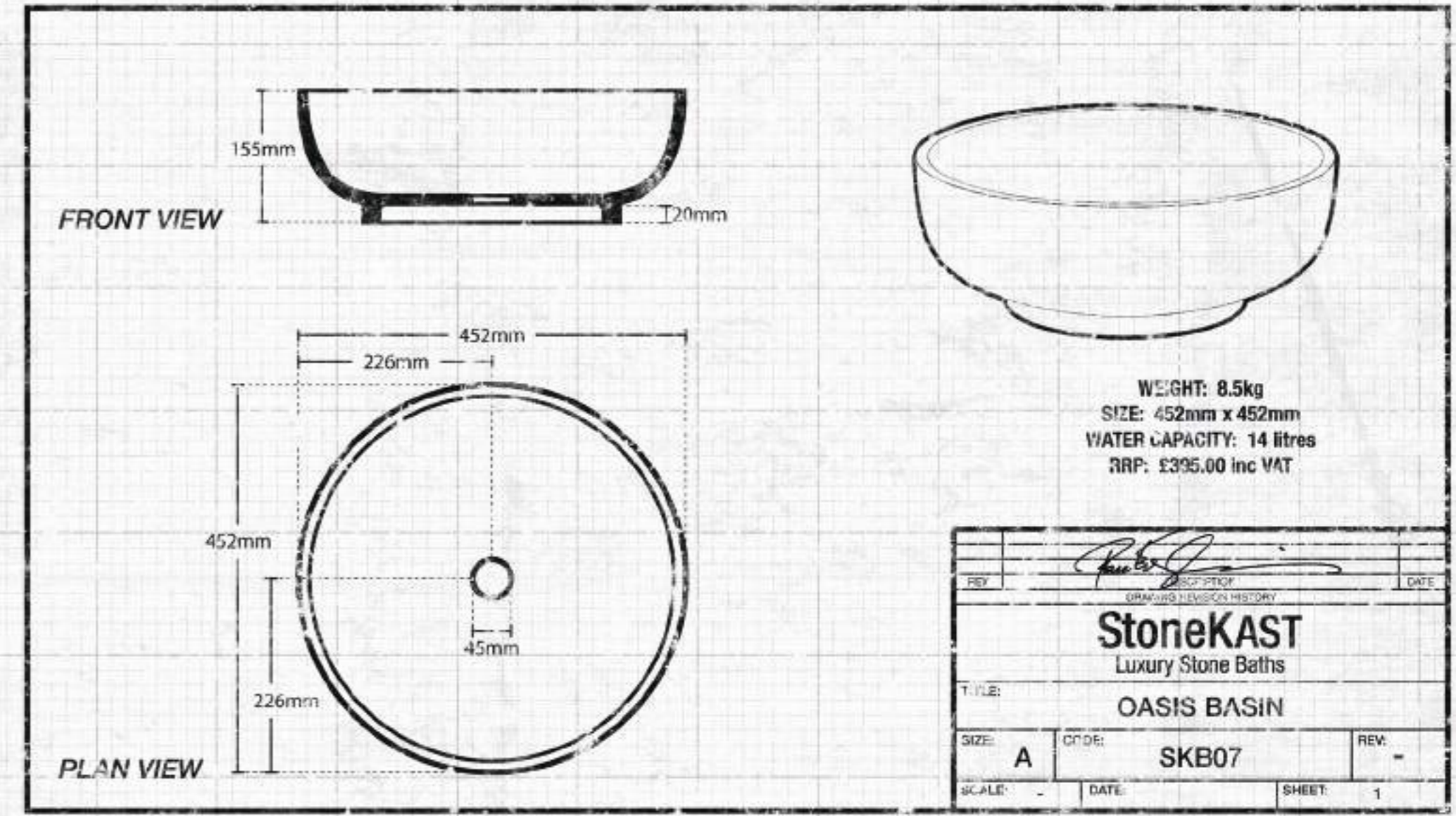
Oasis





Dare2Design + Colour Go to page 90 to find out more





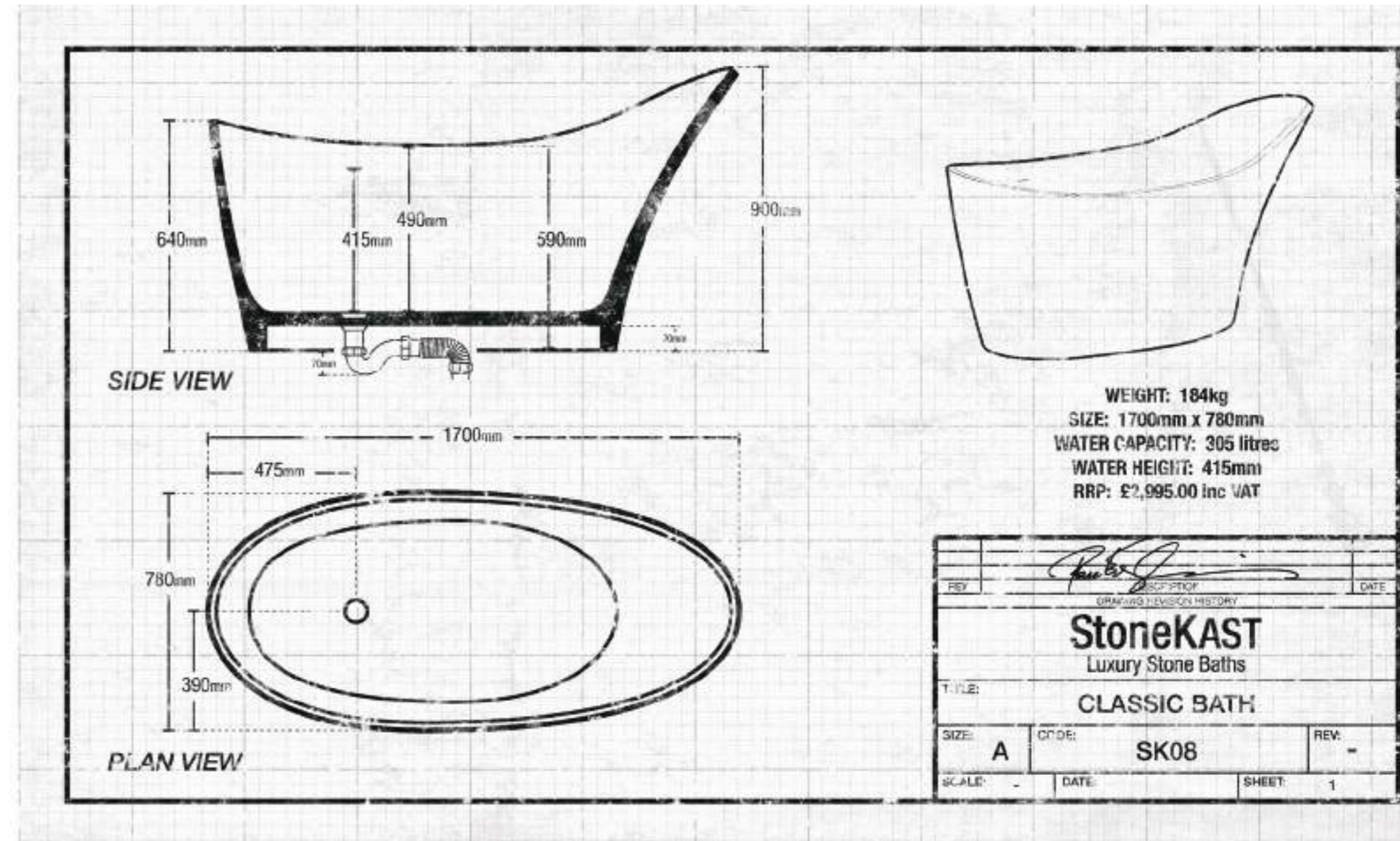


Classic



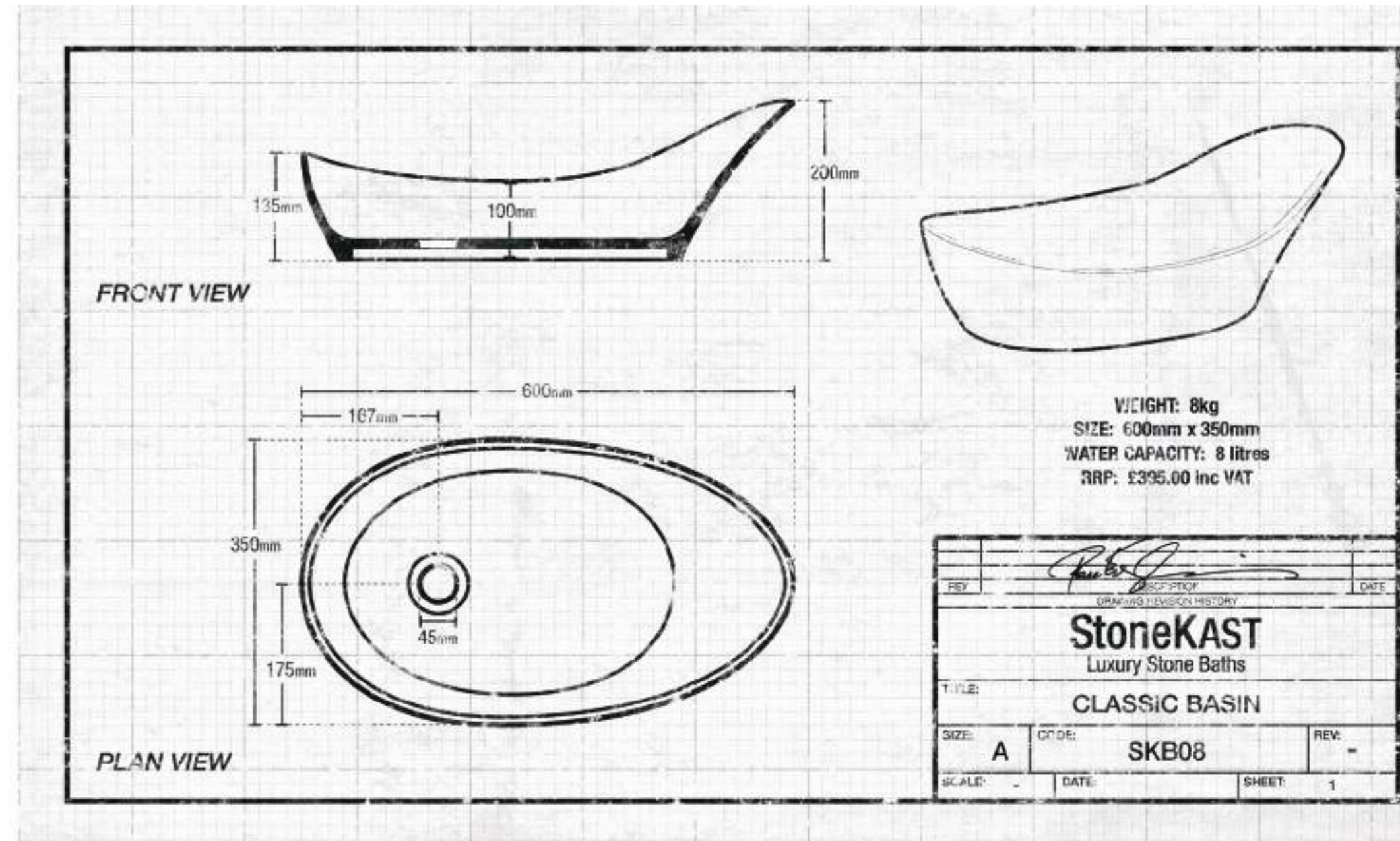


Dare2Design + Colour Go to page 90 to find out more





Dare2Design + Colour Go to page 90 to find out more



Mini Collection

1500mm Luxury Bathing



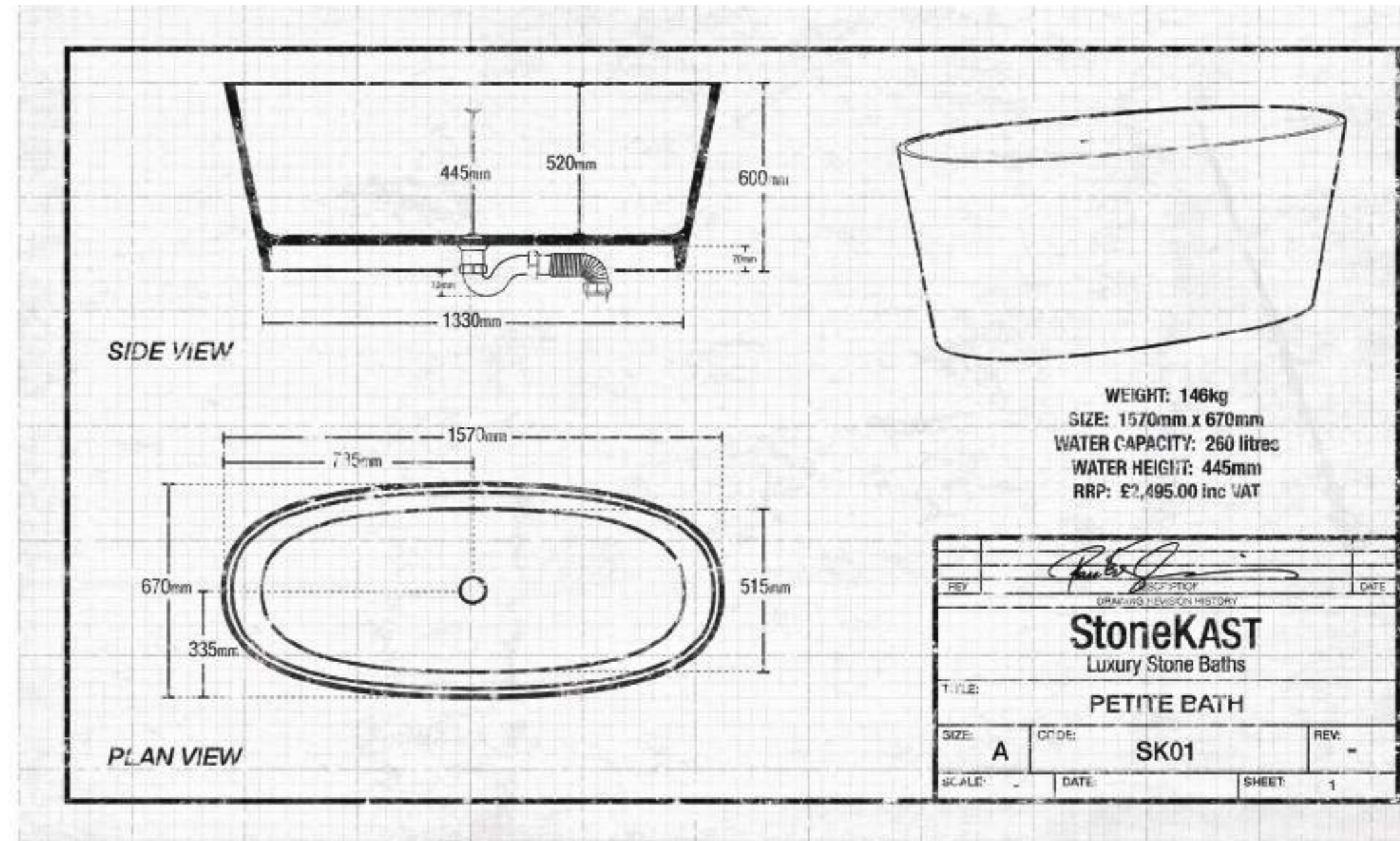


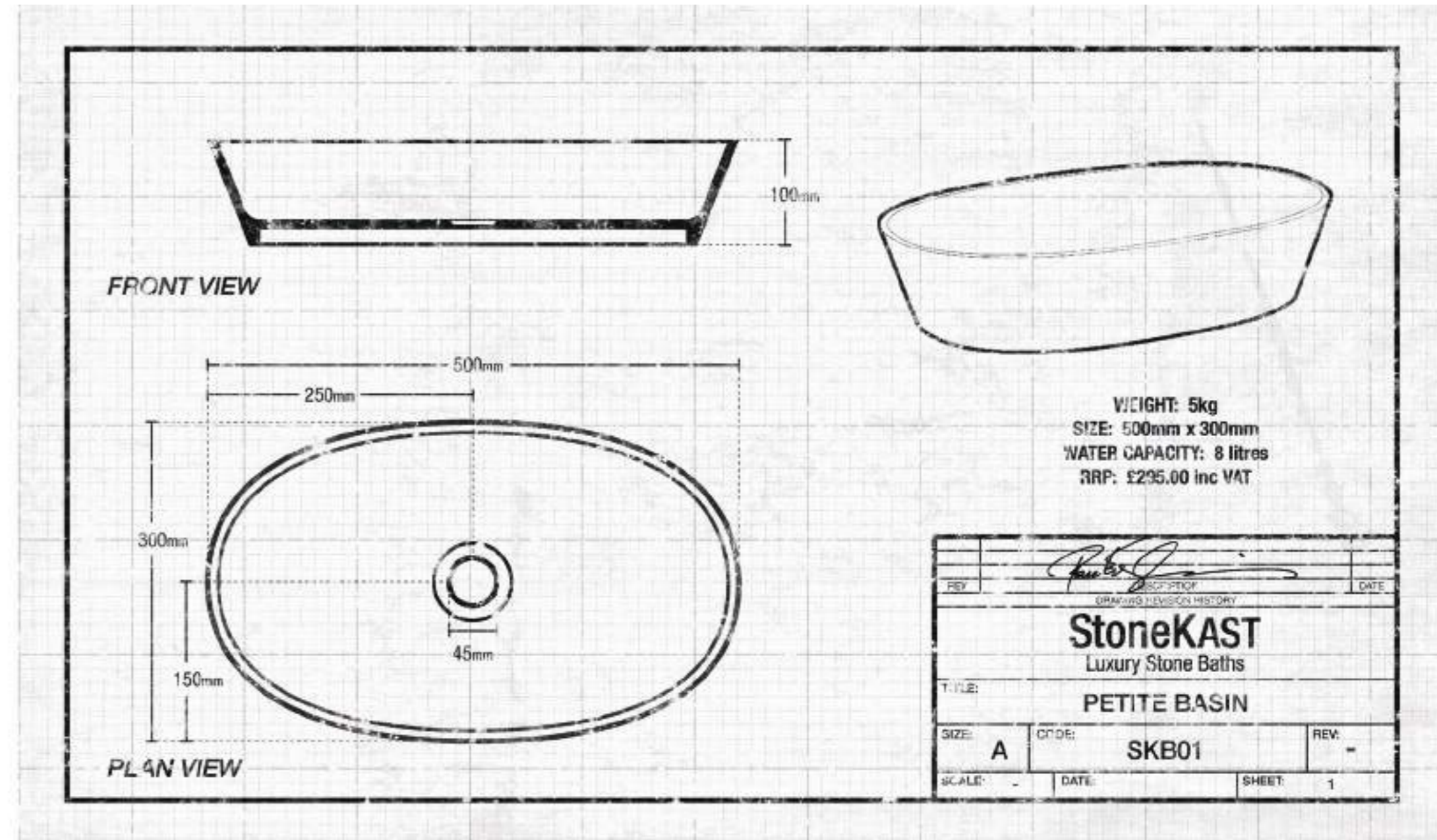
Petite





Dare2Design + Colour Go to page 90 to find out more



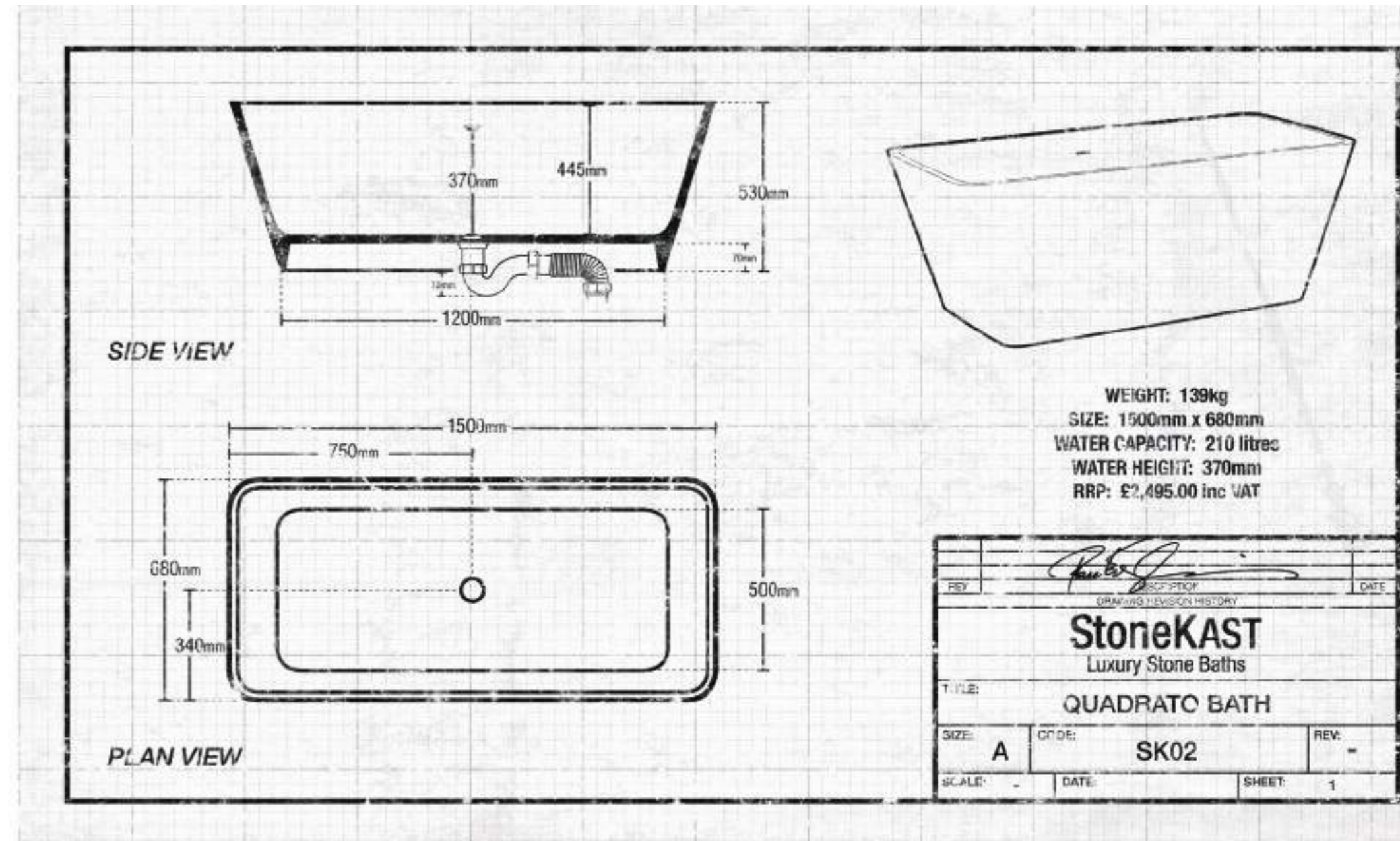


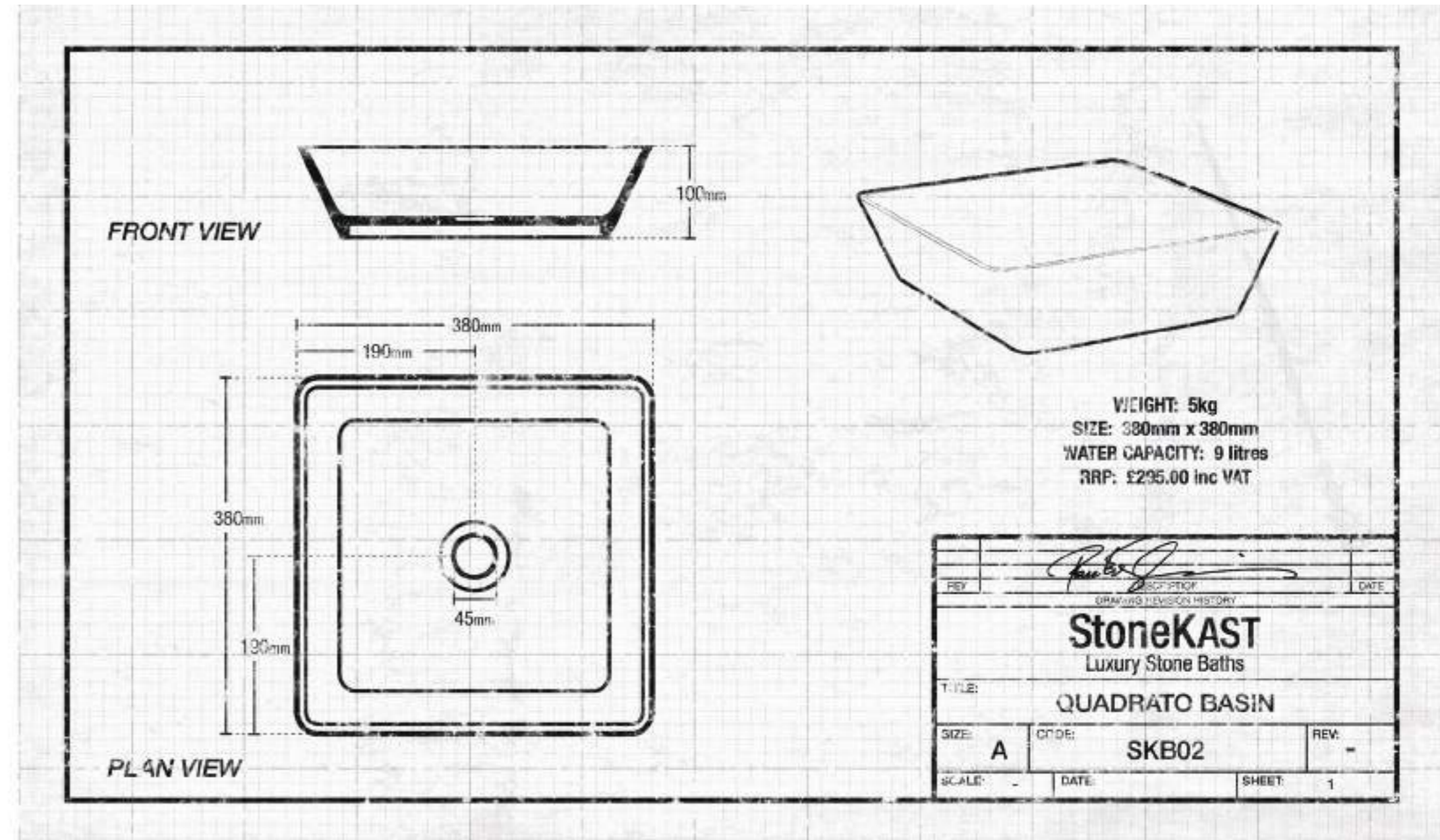






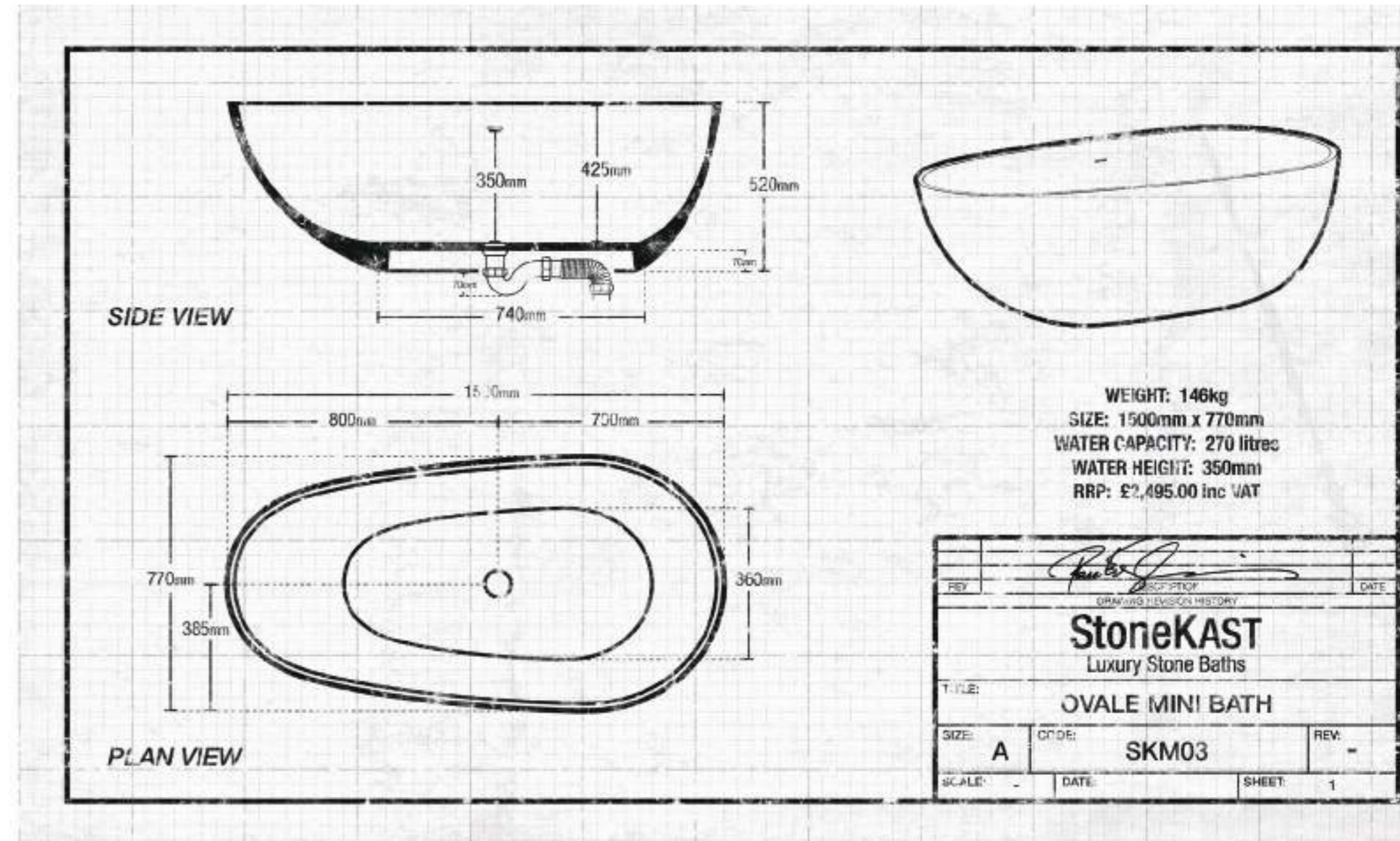
Dare2Design + Colour Go to page 90 to find out more





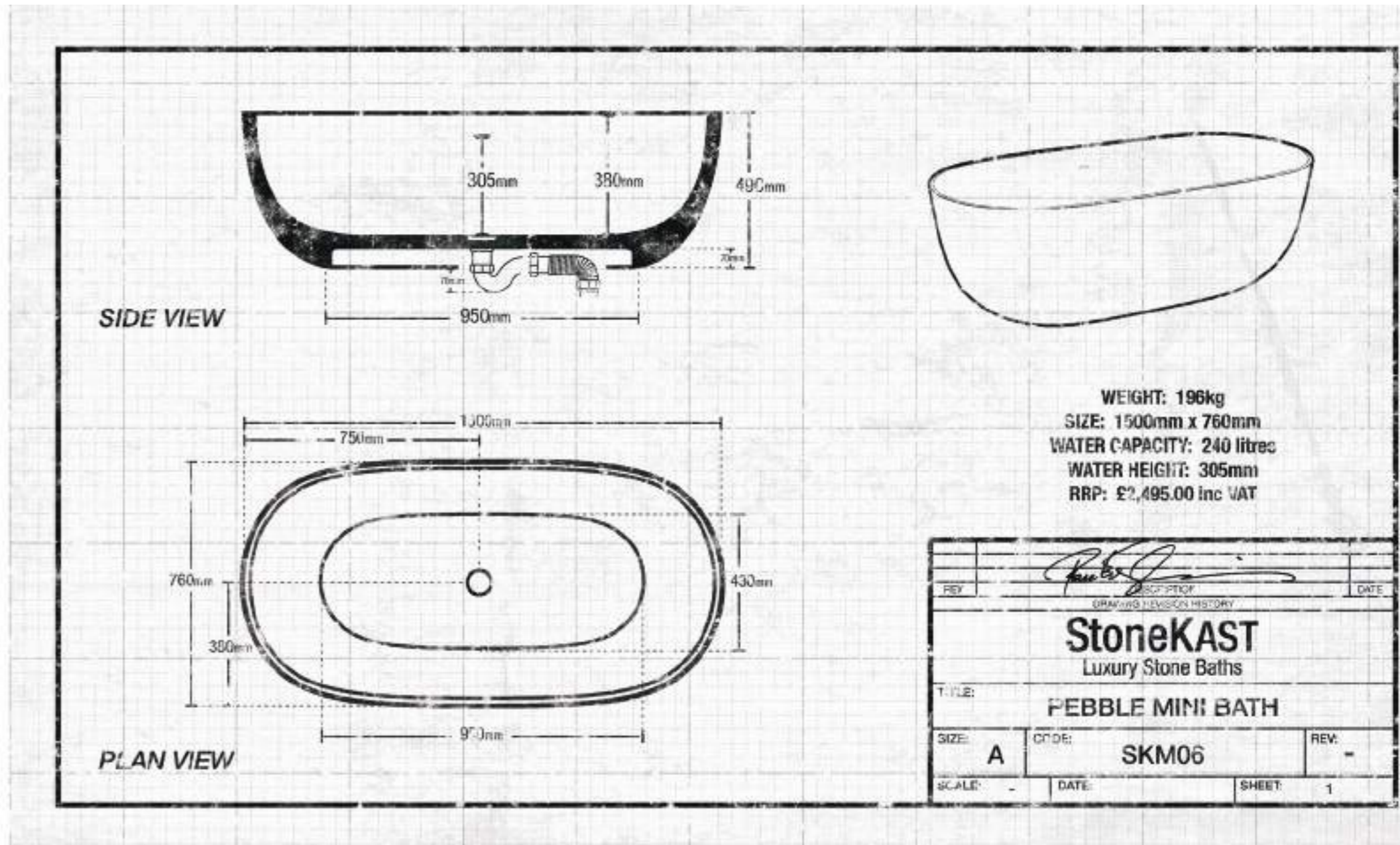


Ovale Mini





Pebble Mini

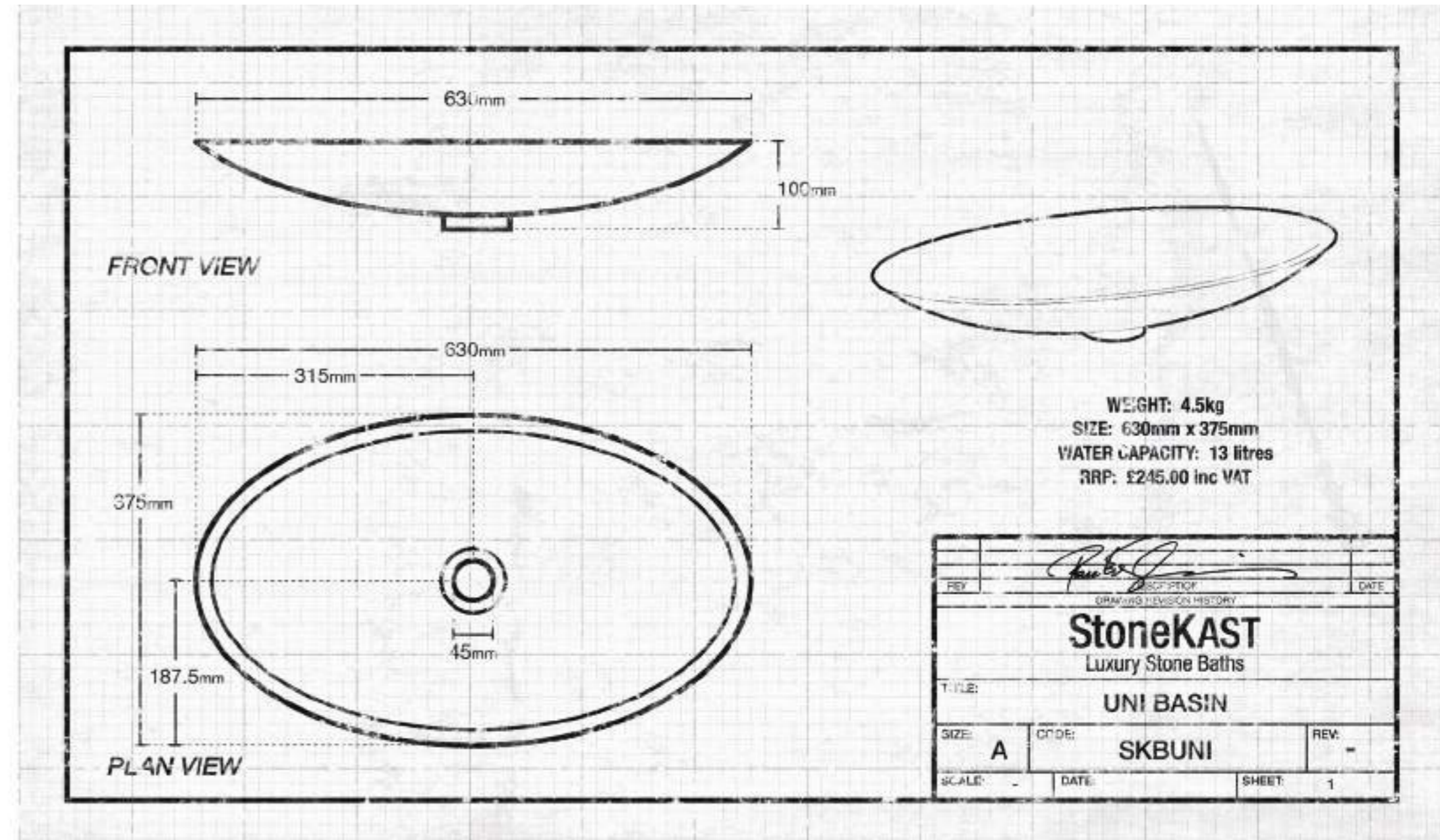


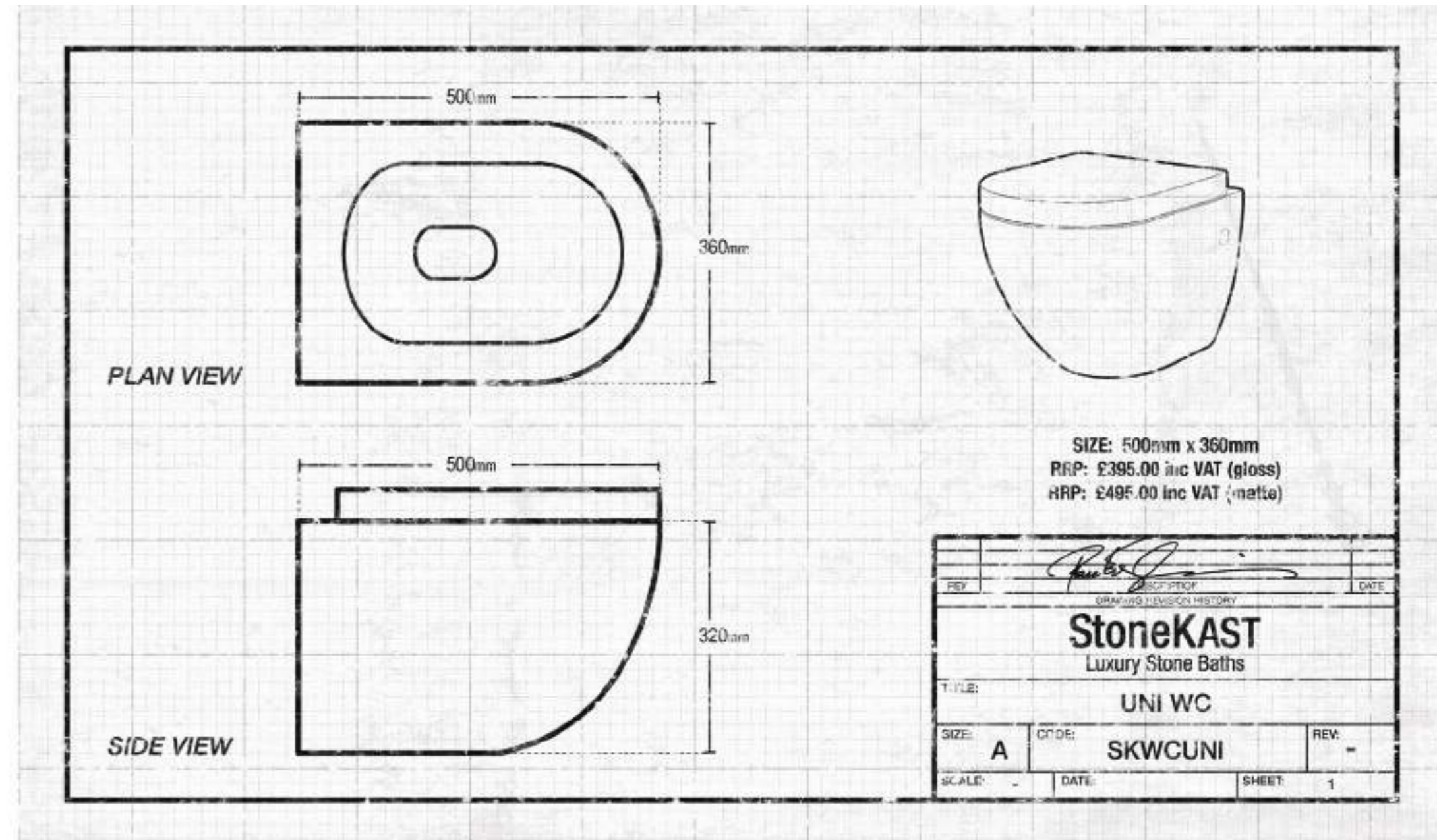
Uni



Uni

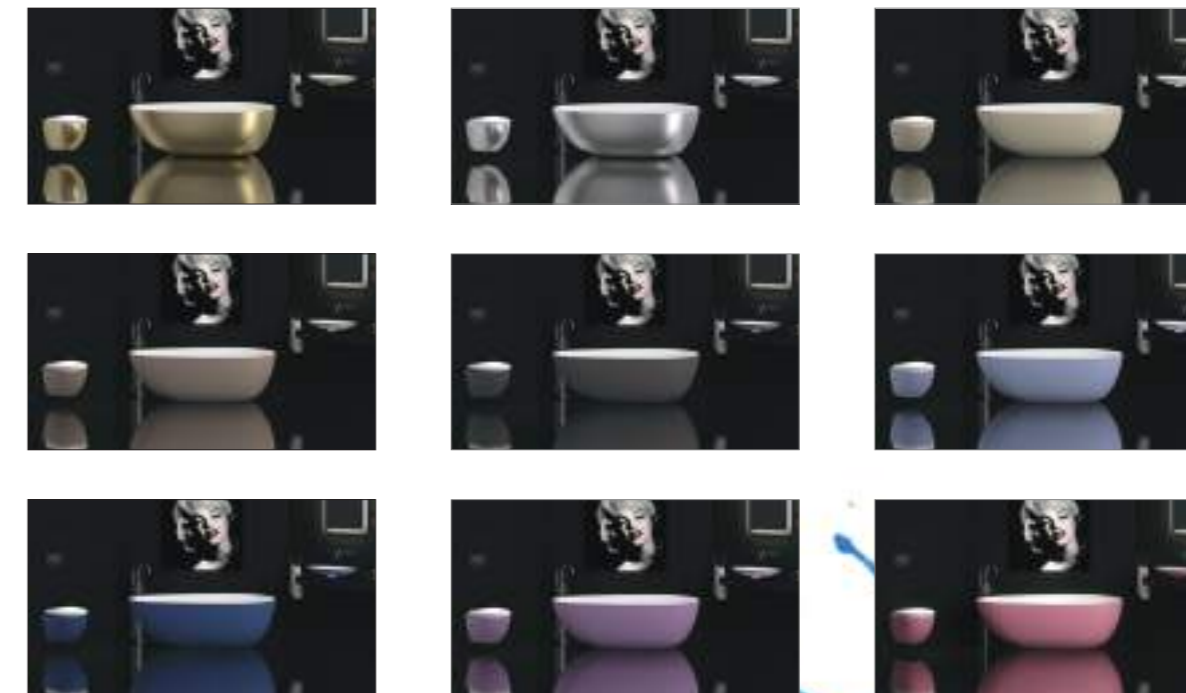






StoneKAST Uni WC Available in matte or gloss and includes soft-close seat.

Dare2Design + Colour



Dare2Design + Colour

For a truly individual finish choose from a variety of vibrant shades to add colour to your StoneKAST bath, basin and WC. With our Dare2Design colour service, a coloured coating is added to the exterior of the product, creating a striking finishing touch for any contemporary bathroom.

Choose from a wide palette of bold colours to create a truly unique impression that dares to be different and offers a stunning contrast to the crisp white interior.

Dare2Design + Colour is available on all StoneKAST baths, basins and WC.
For colour finish a surcharge of 30% is applicable.
For metallic finish a surcharge of 50% is applicable.

To find out more please contact your local StoneKAST specialist or visit our website:
www.stonekast.com/dare2design

Dare2Design + Colour



Dare2Design + Colour





Dare2Design + Colour



Dare2Design + Colour





Waste System

Every StoneKAST bath comes complete with a UK standard polished chrome waste pre fitted, although the below options are available to order separately:



SKWPC
StoneKAST Slotted Waste
Polished Chrome



SKWBC
StoneKAST Slotted Waste
Brushed Chrome



SKWPN
StoneKAST Slotted Waste
Polished Nickel



SKWBN
StoneKAST Slotted Waste
Brushed Nickel



SKWAG
StoneKAST Slotted Waste
Antique Gold



SKWSW
StoneKAST Slotted Waste
StoneKAST White

StoneKAST Guarantee

A StoneKAST bath is for life, that's why we offer a lifetime guarantee against any manufacturing faults on any of our baths.

- The guarantee is only available to the original customer who has proof of purchase.
- If the product has been installed, StoneKAST must be given the opportunity to inspect the product in the installed condition.
- The guarantee is valid in the country of purchase only.
- The guarantee does not cover ex display items.
- The benefit of the guarantee cannot be transferred to a third party.
- The guarantee is in addition to and does not affect your statutory rights.

How to Order

Consumers can order via our national network of retail outlets and stockists details can be found on www.stonekast.com

How To Contact Us

Details of your country's authorised StoneKAST distributor can be found on our website. For any direct enquiries or technical support please email us on info@stonekast.com

FAQs

Where do I put my taps for a StoneKAST bath?

There are many bath filling options available. You can use either floor standing or wall mounted bath taps, with or without hand shower kits, which will only add to the fantastic looks of the StoneKAST baths. Where space is an issue, the wall mounted bath taps (either bath filler kit, bath shower mixer or bath spout with separate mixer valve) will probably be more suitable. If the bathroom allows a little more space for the StoneKAST bath to take centre stage then a floor standing bath shower mixer or floor standing bath spout with add wow factor to an already beautiful setting.

What waste and trap system do you recommend for a StoneKAST bath?

We recommend using the McAlpine SM10 trap with the pre fitted StoneKAST waste, which conforms to current building regulations, as it has a 50mm water seal. Current building regulations state the minimum depth seal for traps should not be less than 38mm. You will also need a McAlpine T12A-2 Extension, which is a two inch extension piece which must be fitted directly onto the waste of the bath so that the trap does not become obstructed by the bottom of the bath.

How do I keep my StoneKAST bath clean?

The StoneKAST freestanding stone bath you have purchased for your home or project is an investment that will provide years of luxurious bathing and a unique centrepiece for your bathroom. StoneKAST is a natural product so simple care and maintenance will preserve its beauty for years to come. Please refer to the download section of our website where you can download care instructions.

Is a StoneKAST bath easy to install?

StoneKAST freestanding baths have been designed with installation in mind, however any installation should be carried out by a professional with knowledge of statutory plumbing requirements in your country. Please refer to the download section of our website where you can download installation instructions.

Does a StoneKAST Stone Bath have an overflow?

Every StoneKAST Freestanding stone bath has a seamless built in overflow. This is now a legal requirement under UK Building Regulations for new builds.

How are the StoneKAST Baths delivered?

Every StoneKAST bath is securely crated from the factory, and every care is taken throughout the logistics process to ensure the baths arrive to site in perfect condition. Please ensure your installers are aware of the weight and size of the bath you have ordered and are present on day of delivery. If you or your installers have any concerns about handling our baths then please contact us and we will be able to offer advice and/or details of specialist lifting companies who will be able to assist you.

How heavy are StoneKAST baths?

Beware of cheap and light, plastic based imitations! A StoneKAST bath is made from high quality limestone composite material. Our lightest bath is 139 Kg and our heaviest 215 Kg. The weights of the stone baths are shown on each bath product page.

Will my bathroom floor take the weight of a StoneKAST Freestanding Stone Bath?

Most properties will be able to take the weight of a StoneKAST bath, however sometimes with slight modification. We would always recommend that you seek professional advice before installation.

Will my floor be suitable for a StoneKAST bath?

A StoneKAST bath must be installed onto a solid, level surface that will not allow any movement, if you are unsure that your floor will be suitable we would recommend that you seek advice from a structural engineer. All StoneKAST baths have a raised void which will reduce the depth required to accommodate a trap, however in most cases the trap will protrude up to 60mm below the bottom of the bath so please ensure you are able to channel into the floor prior to purchase, and that the pipework connected to the trap can run underneath the floor. Please note that StoneKAST baths do come with a chrome slotted waste as standard however traps and additional pipework must be either supplied by your installer or purchased separately, to conform to new building regulations we would recommend a McAlpine SM10 Trap to be used in conjunction with a T12A-2 extension piece.

Does a StoneKAST Bath retain heat well?

A StoneKast stone bath will retain heat much better than a steel or acrylic bath due to the heat insulating properties of the materials used and the thickness of the walls. Limestone which is the main ingredient of the StoneKAST blend, can withstand working temperatures of up to 355 C as opposed to 50 C of acrylic, has a thermal shock resistance 5 times that of acrylic, and conducts (therefore retains) heat at almost ten times the rate of acrylic. The compressive strength of acrylic is 80 MPa compared with 700MPa of limestone.

Will pipe work need to go into the floor?

All StoneKAST baths have a raised void which will reduce the depth in the floor required to accommodate a trap, however in most cases the trap will protrude up to 70mm below the bottom of the bath so please ensure you are able to channel into the floor and that no underfloor heating has or will be installed directly below the base of the bath prior to purchase. Please note that StoneKAST baths do come with a chrome slotted waste as standard however traps and additional pipework must be either supplied by your installer or purchased separately. To conform to new building regulations we would recommend a McAlpine SM10 Trap to be used in conjunction with a T12A-2 extension piece.

Thanks to:

White Room - Faerber - Oli - European Tiles - SJ Fraser - LT

Note: The exact colour and finish of products may vary from those depicted in this brochure. We always recommend that consumers visit their nearest StoneKAST approved stockist, details of which can be obtained through our website: www.StoneKAST.com

StoneKAST carries out regular manufacturing reviews and operates a continual improvement program. Therefore product specifications may be changed without prior notice. All bath dimensions listed are intended as a guide only. Being cast products they are subject to a size variance of +/- 5%.

StoneKAST

Luxury Stone Baths

StoneKAST Ltd - Part of the Design Manufacturing Group
UK PHONE + 44 845 504 0474

info@stonekast.com
www.stonekast.com