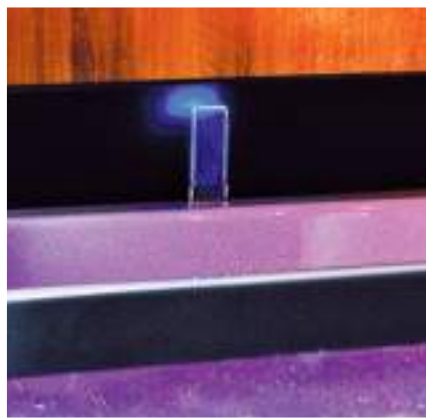
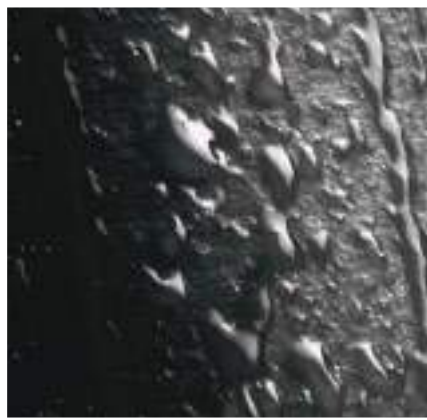
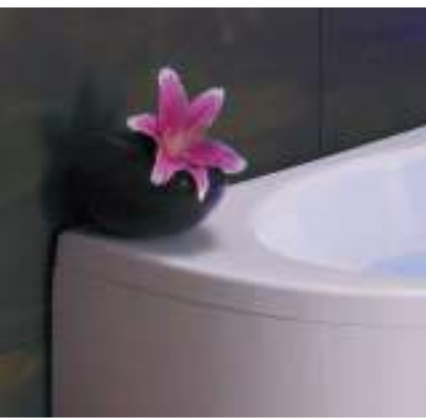
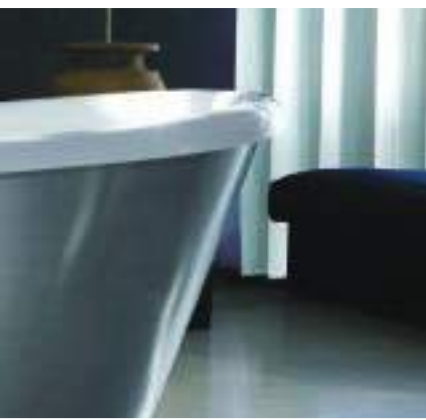


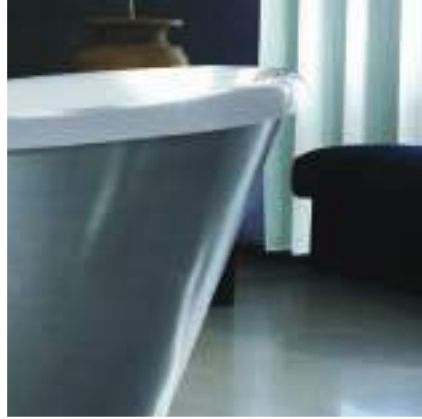


POOLSPA

Luxury bathing and hydrotherapy







Don't you deserve the most luxurious bathing experience that money can buy?

Daring contrasts of materials, technology, colours and massage systems. A unique combination of luxury bathing with ultimate hydrotherapy when desired.

Pool Spa is one of the precious few ways to make our modern, busy and stressful lives more enjoyable. Pool Spa enables you to live for the moment and enjoy every amazing experience, relaxed, refreshed and invigorated.

Each product is skilfully design and crafted to ensure that not only is the product manufactured with the most specialist materials to be found globally to provide that much desired feeling of exquisite and opulent bathing; to also guarantee that the bathing experience itself is as equally gratifying as the carefully selected form of art that the desired bath is itself.

Pool Spa is unmistakable and reflective of the time and effort to hand craft each product; Pool Spa is about passion.

Detail





POOLSPA

Discover Luxury

DISCOVER POOLSPA

Our ethos

Since the Pool Spa creation in 1990, we've believed in one simple principle - life is more enjoyable when time is taken for oneself to relax. Everybody deserves individual time daily to refresh, relax and just breathe.

We pride ourselves in providing exceptionally high qualities of product, with personal touches that helps our customers get more out of life.

Pool Spa and you

A Pool Spa product is unique to you - designed around your exact requirements and within your desired price range.

Our professional, experienced team is the very best, mentored with the philosophy that everybody deserves luxury and the journey to selecting a Pool Spa product should be equally as luxurious.



Sekret





This award winning, extravagant bath is the epitome of high end design, form and function created by Antonio Bullo. The 'no panel' design leaves little to the imagination with a bountiful feeling of open space and luxury.

The unique and indulgent chromotherapy lighting (66 individual LED's) enchantingly located within the clear bath frontage emulates the most lavish bathing experience designed perfectly for you. This incredible lighting effect is standard on both options of this 'elite' bath with or without the incredible benefits of the luxurious champagne effect heated 'air massage' that will rejuvenate, relax and invigorate.

Dimensions: 180 x 80 (left and right hand version available)



Future

Elegant and sophisticated contouring makes the Future bath the only future for you when selecting an opulent focal attraction for your bathroom. Deep and luxurious proportions will provide a daily bathing experience that is unforgettable.

Dimensions: 180 x 85





Fantasy

Wondrous symmetry for sumptuous and modern 'dual' bathing this bath delivers everything you would want from your lavish bathing haven. Choose from sleek and simple bathing or select a restoring and rejuvenating massage system to share the much needed 'quality relaxation' with that special someone.

Dimensions: 185 x 115



Vanity

The name says it all! Pure and unadulterated 'vanity' within your home. This incredible piece of indulgence will render you speechless. A piece of art form that is both glamorous yet subtle. Pure art and design doesn't have to be loud or bold to be dazzlingly statemental.

Dimensions: 190 x 95



Laura

Clean yet sublimely sumptuous contouring makes Laura not anywhere near as unassuming as the name she was given. This model is breathtakingly minimalist whilst providing unassuming bathing space and relaxation. Don't be fooled, this bath is perfection and don't you deserve the very best in this moment, right now?

Dimensions: 140 x 80 / 150 x 90



Vita

Minimalist, sharp and sleek contouring makes the Vita a design to revere. Utterly simplistic with undeniable opulence this bath is pure modern sophistication but still designed with comfort in mind. Designer bathing with or without the added indulgence of massage, for you to choose one of the 4 deluxe dimensions!

Dimensions: 170 x 75 / 180 x 80 / 180 x 90 / 190 x 90







Aura

The very essence of luxury designed for maximum relaxation that cannot be washed away. Fascinating and captivating contouring leaves little to the imagination. Could you refuse the sumptuous calling of this bath, promising unimaginable relaxation and massage benefits? The aerial image premieres the new heated 'air massage' only system with 10 strategically located LED chromotherapy lights for sublime and sophisticated bathing.

Dimensions: 190 x 100 / 204 x 103
(acrylic casing only available to the 204)

Nostalgia



This elegant design has been re-engineered to provide a modern dynamic to traditional 'free standing' bathing. An added 'edge' of opulence with its bold claw design feet (options available) makes Nostalgia the ultimate reference of luxury chosen by those with a passion for style and quality.

Dimensions: 174 x 82



Leda

The outstanding curves and contouring of this bath is absolute elegance for those seeking a design orientated harmony within the bathroom. Absolute elegance combined with our without hydromassage extravagance makes Leda perfection for your oasis of relaxation.

Dimensions: 150/160 x 100

Vogue



Magnificent brushed aluminium casing with stunning detail encapsulates the fashionable Vogue bath. The boutique and ravishing appeal of this bath is quite simply breath-taking and would be the talking point of any designer bathroom. Glamorous bathing to restore your natural balance.

Dimensions: 172 x 69





Nicole

Sharp and smart the Nicole is unprecedented design and manufacturing at its best. The coveted aesthetics will make this the flagship element within any bathroom. Unique contouring makes this bath space saving yet the ultimate in bathing comfort.

Dimensions: 140 x 75 / 150/160 x 80 / 150 x 90 / 160 x 95



Vision

Incomparable designer bathing! A true piece of artwork within the bathroom; that could be found within any 5 Star Hotel or Spa throughout the world. Providing that ultimate wellness feeling that only specialist 'getaways' provide. Don't you deserve the most luxurious bathing experience that money can buy, every day?

Dimensions: 180 x 95





Sydney



Total comfort coupled with total design was at the forefront of the designers minds. Contoured back rest and shapely ergonomics are paramount within the stylish rectangular Sydney. A soothing pillow provides complete relaxation to enable relaxation to flow either as a bath or combining the ultimate in hydromassage.

Dimensions: 175 x 75

Serene beauty and form, Mistral is available with the stylish curvature of the sleek glass shower screen or purely for space saving bathing. This new model of the range presents a unique combination of luxury bathing with ultimate rejuvenating and relaxing hydrotherapy if desired.

Dimensions: 150/160/170 x 105

Mistral





Atlantyda
Dimensions: 160 X 160



Corazon
Dimensions: 180 X 180



Orbita
Dimensions: 140/150/160 x 100



Francja
Dimensions:
140/150 X 150



Quarzo
Dimensions: 180 X 90



Next
Dimensions: 190 X 95



Windsor is one of the precious few ways to make our modern, busy and stressful lives more enjoyable. This fantastically contemporary bath enables you to live for the moment and enjoy every amazing experience, relaxed, refreshed and invigorated.

Dimensions: 180 x 85 / 190 x 85

Windsor



Aquamarina



Dual bathing perfected. Spacious combinations of designer 'off set' corner aesthetics provides temptingly ultimate extravagance to share. Relax into the sleek ergonomics designed for optimum comfort, deep relaxation and sheer elegance. Aquamarina is the heart of hydrotherapy bathing!

Dimensions: Dual Bathing 175 x 120
Single Bathing 175 x 100



Single bathing option also available

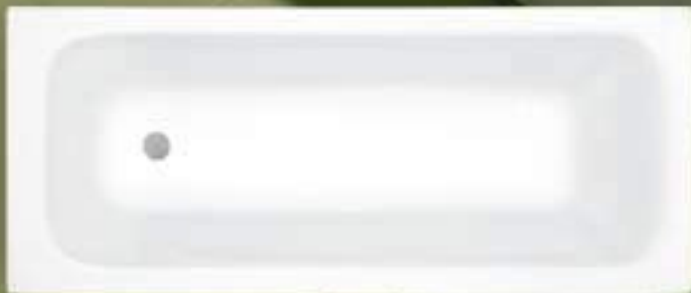


Linea



Linea is skilful craftsmanship and our 2012 'Olympic Year' bath. Sleek, chic and contemporary contouring brings to life hydrotherapy extravagance and ultimate bathing performance which would set any Olympic torch alight. Indulgent and high performance bathing from the leading product of 'Team Pool Spa'!

Dimensions: 140/150/160/170 x 70 / 170 x 75 / 180 x 80



Klio

Exquisite form and function is the stylish Klio. Compact in size yet infinite in style, chic and sophistication the contoured ergonomics and depth of bathing form make this the 'must have' for any bathing environment. Captivate beauty within your haven!

Dimensions: 120/130/140/160/170 x 70



Dimensions: 163 x 103



Dimensions: 150 x 100



Dimensions: 140 x 80



Klio Asym

Calm, tranquil yet bold in presence this type of beauty is what every bathroom deserves. Treat yourself, day in and day out, with the elegance that you deserve. Generous proportions with dynamic and relaxing contours create a design statement that is unforgettable.



Discover Luxury

DISCOVER WELLBEING



POOLSPA



HYDROTHERAPY

“HYDROMASSAGE IS THE KEY TO ACTIVATING THE BODY’S NATURAL HEALING ENERGIES AND HOLDS COUNTLESS POSITIVE BENEFITS.”

All Pool Spa products are designed in conjunction with leading specialists and hydromassage practitioners providing an unrivalled choice of hydromassage systems with market leading experts that will soothe the mind, body and soul.

Pool Spa technology pushes the boundaries of ‘basic’ hydrotherapy and manufacturing limitations of other producers. This on-going quest of achieving ‘perfect’ massage therapy is what sets Pool Spa at the pinnacle of pioneering manufacturing and able to supply the ever demanding consumer the best that money can buy.

Extensive research combined with Pool Spa’s unique appreciation of both ancient and modern massage principles, Pool Spa provides the bather with a truly beneficial course of ‘hydro treatments’. Pool Spa views their products as ‘medical’ therapy incorporating at least 3 different types of both rotational and adjustable jets, strategically located by design

experts to provide true ‘medical therapy’ which catapults hydrotherapy to new dimensions.

The unique jets and arrangements combined with aromatherapy and chromotherapy induce a deep and internal massage that will provide an abundant number of physical benefits:

- Physically relaxes the body
- Improves Circulation
- Reduces muscular aches and pains
- Improves skin and muscle tone
- Reduces stress and anxiety
- Increases energy levels
- Induces mental relaxation
- Enhances restful sleep
- Aids in weight loss
- Creates a feeling of wellness

For more information on the physical benefits of Pool Spa contact one of our ‘Wellness Experts’ at our UK Sales & Wellbeing office.



AIR THERAPY

“AIR MASSAGE – REJUVENATING, REFRESHING AND RELAXING”

The Pool Spa air massage is without doubt one of the most comfortable and technically advanced air systems available in the today's modern hydrotherapy market. The bath is manufactured to incorporate a rooted air channel in the base of the bath, eliminating the need for uncomfortable and unsightly air spa jets.

The small yet vast number of evenly distributed air clusters in the bath chamber produces millions of exhilarating warm bubbles known as 'champagne massage'. The unique pattern of the distribution of the air ensure complete massage of the body and legs is evenly distributed, providing limitless massage benefits.

A warm air massage system allows for stimulation of the skin and is designed to penetrate deep into the muscle. Moreover, warm air massage activates the lymphatic system, enhances blood circulation and cell oxygenation. An increase in blood flow is also known to help dissolve and eliminate toxins from the body. The unbelievable benefits of air massage must be discovered leaving the skin

rejuvenated, revitalised, plumped and looking years younger. A course of treatments guarantees to see a reduction in cellulite and a huge increase in skin toning and structure.

Ozonation of the water unique to Pool Spa air massage bathing guarantees 'total hygiene'. This highly specialist equipment installed in all air systems purifies the bathing water, destroying any bacteria present, providing oxidised water each and every time you bathe. No areas of health and hygiene are left uncovered by the team of Pool Spa specialists.

The physical benefits of Pool Spa air massage are life changing and this luxurious journey must be taken first hand to appreciate how much the body and mind can truly benefit:

- Encourages skin regeneration
- Combats cellulite
- Reduces fine stretch marks
- Re-tones and strengthens the skin
- Reduces visibly dark veins
- Induces a deep state of relaxation
- Counters the harmful effects of stress
- Aids in weight loss

HYDROTHERAPY MADE PERFECT

If you are suffering from any of the following symptoms Arthritis, Rheumatism, Sciatica, Aching Joints, Back Pain, Fatigue, Insomnia, Circulation, Stress, Muscular pain, Stiffness, Cramps or Tension, see how Hydrotherapy can target these problems very effectively.

Pain Relief

Hydrotherapy is proven to be a highly effective form of natural therapy which works by stimulating the endorphins which in turn helps you to control pain and alleviate tension. The hydrobath works by releasing millions of large bubbles, which relaxes your muscular tension and helps to reduce swollen joints giving you increased mobility and more importantly lessens your pain. The hydrobath also releases very fine bubbles, this has a soothing tranquil effect on your body which helps relieve your stress and tension.

Circulation

Our hydrobath has a remarkable and almost magical ability to improve circulation. Your blood flow takes oxygen and nourishment to all your cells and tissues. When working correctly, this forms the basis of a healthy life. Good circulation also brings the benefit of good lymph drainage which helps to clear the body of toxins.

Immune System

Detoxing regularly, leads to a stronger immune system which is able to cope with controlling viruses, bacteria and infections. Your immune system is your internal police force and when working efficiently, helps you overcome minor infections ranging from the common cold right up to deadly diseases.

Stress

Hydrotherapy can provide you with the vital key to breaking the stress cycle of everyday modern life. In today's busy world you can be prone to stress related illnesses which can cause a wide range of physical and psychological problems. For example, high blood pressure, headaches, digestive complaints, insomnia, depression, anxiety attacks, the list is endless. Unfortunately stress not only affects the mind but more importantly your immune system.

Complexion

The hydrobath helps to regulate your body's temperature control by improving the efficiency of your perspiration glands. This releases the toxins from your body and leaves you with a healthy glowing complexion. If you look better you will feel better. The oxygen

flow is increased by the effect of the millions of bubbles and this activity can also help reduce fluid retention and even have a dramatic effect on other ailments such as cellulite. In short, Hydrotherapy offers an excellent way for you to regain and maintain a healthy and painless body. Any natural treatment that can help you to revitalise and de-stress, without producing the detrimental side effects of some of today's modern drugs has got to be the way forward.

What happens to you during Hydrotherapy?

When you are in pain or under stress, chemical changes in your body can cause the blood pressure and pulse rate to increase, Having regular hydrotherapy treatments can help you to reduce these symptoms by relieving swollen joints and slowing down the process of stress reaction. This will help you to relax and unwind, which is easier for you, helping you to deal with your pain.

In your first treatment

After 5 minutes - your blood pressure and pulse rates start to drop. After 10 minutes - your circulation improves in your hands and feet making them warmer.

After 15 minutes - your muscles will relax becoming more receptive to passive exercise, fibrous tissue becomes more pliable and responsive to stretching encouraging the release of lactic acid and other toxins from your system.

After 20 minutes - your aches and pains will experience a temporary decrease in severity.

Further Treatments

After 3 treatments - your immune system will be improved.

After 5 treatments - tension, emotional and physical pain will noticeably be reduced.

After 10 treatments - your pain relief will be longer lasting, you'll experience a greater sense of wellbeing.

After 20 treatments - you will have a heightened tolerance to disease and depression, your skin will be clearer and glow with health and your muscle tone and mobility will improve.



POOLSPA



HYDROTHERAPY SYSTEMS

PN1

Pneumatic control



Hydromassage

- 4 jets for back massage, with the possibility to adjust the direction of water stream and the regulation of water stream intensity (closed jets)
- 2 jets for foot massage (except Klio Asym 140 x 80) with the possibility to adjust the direction of water stream and the regulation of water stream intensity (closed jets)
- 4 side jets for lateral massage, with the possibility to adjust the direction of water stream
- protection against pump 'dry running'

Hydromassage intensity regulation

The hydromassage intensity regulator, which is responsible for water aeration, is installed as a standard feature to personalise the type of massage you desire. It delivers air to the side, back and foot jets.

System available on baths KLIO, KLIO SYM & KLIO ASYM

PN2

Pneumatic control



Hydromassage

- 4 jets for back massage, with the possibility to adjust the direction of water stream and the regulation of water stream intensity (closed jets)
- 2 jets for foot massage (except Klio Asym 140 x 80) with the possibility to adjust the direction of water stream and the regulation of water stream intensity (closed jets)
- 4 side jets for lateral massage, with the possibility to adjust the direction of water stream
- protection against pump 'dry running'

Airmassage

- unique system of air clusters to provide ultimate air massage therapy

Hydromassage intensity regulation

The hydromassage intensity regulator, which is responsible for water aeration, is installed as a standard feature to personalise the type of massage you desire. It delivers air to the side, back and foot jets.

System available on baths KLIO, KLIO SYM & KLIO ASYM

SX1

Electronic control



Hydromassage

- rotational back massage jets
- rotational foot massage jets
- directional foot massage jets
- fully adjustable/directional side massage jets allow you to personalise your massage
- 'air venturi' allows you to regulate the intensity of the massage via back, foot and side jets
- protection against pump dry running
- water level sensor
- total water drainage after bathing
- 3/4" non return valve for bath filling through the jets

Chromotherapy

- single-point multicolour underwater diode lights

System available on baths KLIO, KLIO SYM & KLIO ASYM and are also available on our 2012 Olympic model LINEA 180.



SX2

Electronic control

Hydromassage

- rotational back massage jets
- rotational foot massage jets
- directional foot massage jets
- fully adjustable/directional side massage jets allow you to personalise your massage
- 'air venturi' allows you to regulate the intensity of the massage via back, foot and side jets
- protection against pump dry running
- water level sensor
- total water drainage after bathing
- 3/4" non return valve for bath filling through the jets

Air massage

- unique system of air massage channels in the bathtub
- air blower with built in 300w temperature maintenance heater
- automatic ozonation of water
- total water drainage from the air massage system after bathing

Chromotherapy

- single-point multicolour underwater diode lights

System available on baths KLIO, KLIO SYM & KLIO ASYM and are also available on our 2012 Olympic model LINEA 180.



Economy 1

Pneumatic control

Hydromassage

- rotational back massage jets
- rotational foot massage jets (for baths with round style jets)
- directional foot massage jets (for baths with square style jets)
- fully adjustable/directional side massage jets allow you to personalise your massage
- 'air venturi' allows you to regulate the intensity of the massage via back, foot and side jets
- same number of jets throughout system Economy 1 - Effects
- protection against pump dry running
- water level sensor
- total water drainage after bathing

Systems available on all models excluding KLIO, KLIO SYM & KLIO ASYM



Economy 2

Pneumatic control

Hydromassage

- rotational back massage jets
- rotational foot massage jets (for baths with round style jets)
- directional foot massage jets (for baths with square style jets)
- fully adjustable/directional side massage jets allow you to personalise your massage
- 'air venturi' allows you to regulate the intensity of the massage via back, foot and side jets
- same number of jets throughout system Economy 1 - Effects
- protection against pump dry running
- water level sensor
- total water drainage after bathing
- unique system of air massage channels in the bathtub
- air blower with built in 300w temperature maintenance heater
- automatic ozonation of water
- total water drainage from the air massage system after bathing

Air massage

- system of air channels in the bathtub
- blower with air heater
- automatic ozonation of water
- water offtake from the air massage system after a bath
- total water drainage from the air massage system after bathing

Systems available on all models excluding KLIO, KLIO SYM & KLIO ASYM



Air Zone



- unique system of air massage channels in the bathtub
- air blower with built in 300w temperature maintenance heater
- automatic ozonation of water
- total water drainage from the air massage system after bathing
- automatic drying of the air massage systems after bathing
- LED Multi-point diodes for illuminating chromotherapy (minimum 10 diodes)

Air Zone is exclusive to models VITA, WINDSOR, SIDNEY, FANTASY and AURA only.

HYDROTHERAPY SYSTEMS

Silver NAVI 1

Electronic control (remote control)

Waterproof remote control with 3 buttons as standard equipment (instead of a fixed electronic control panel). The device can be safely held to the bath surface by the hidden magnetic system. The remote control has a 7-year battery guarantee.



Hydromassage

- rotational back massage jets
- rotational foot massage jets (for baths with round style jets)
- directional foot massage jets (for baths with square style jets)
- fully adjustable/directional side massage jets allow you to personalise your massage
- 'air venturi' allows you to regulate the intensity of the massage via back, foot and side jets
- programmed pulsating water massage for deep, penetrating massage
- water level sensor
- protection against pump dry running
- total water drainage after bathing

The setting of maximum time of bath 30 min

Systems available on all models excluding KLIO, KLIO SYM & KLIO ASYM

Silver NAVI 2

Electronic control (remote control)

Waterproof remote control with 4 buttons as standard equipment (instead of a fixed electronic control panel). The device can be safely held to the bath surface by the hidden magnetic system. The remote control has a 7-year battery guarantee.



Hydromassage

- rotational back massage jets
- rotational foot massage jets (for baths with round style jets)
- directional foot massage jets (for baths with square style jets)
- fully adjustable/directional side massage jets allow you to personalise your massage
- 'air venturi' allows you to regulate the intensity of the massage via back, foot and side jets
- programmed pulsating water massage for deep, penetrating massage
- water level sensor
- protection against pump dry running
- total water drainage after bathing

Air massage

- unique system of air channels in the bathtub
- air blower with built in 300w temperature maintenance heater
- automatic ozonation of water
- electronic regulation of air massage intensity
- programmed pulsating air massage
- total water drainage from the air massage system after bathing
- automatic drying of the air massage systems after bathing
- automatic blowing/drying of air channels every 24 hours

The setting of maximum time of bath 30 min

Systems available on all models excluding KLIO, KLIO SYM & KLIO ASYM

Silver NAVI 1 Mambo

Electronic control (remote control)

Waterproof remote control with 3 buttons as standard equipment (instead of a fixed electronic control panel). The device can be safely held to the bath surface by the hidden magnetic system. The remote control has a 7-year battery guarantee.



Hydromassage

- rotational back massage jets
- rotational foot massage jets (for baths with round style jets)
- directional foot massage jets (for baths with square style jets)
- fully adjustable/directional side massage jets allow you to personalise your massage
- 'air venturi' allows you to regulate the intensity of the massage via back, foot and side jets
- programmed pulsating water massage for deep, penetrating massage
- water level sensor
- protection against pump dry running
- total water drainage after bathing

The setting of maximum time of bath 30 min

Chromotherapy

- unique multi-coloured lighting programs to enhance bathing and health benefits

Systems available on all models excluding KLIO, KLIO SYM & KLIO ASYM

POOLSPA

Silver NAVI 2 Mambo

Electronic control (remote control)

Waterproof remote control with 4 buttons as standard equipment (instead of a fixed electronic control panel). The device can be safely held to the bath surface by the hidden magnetic system. The remote control has a 7-year battery guarantee.



Hydromassage

- rotational back massage jets
- rotational foot massage jets (for baths with round style jets)
- directional foot massage jets (for baths with square style jets)
- fully adjustable/directional side massage jets allow you to personalise your massage
- 'air venturi' allows you to regulate the intensity of the massage via back, foot and side jets
- programmed pulsating water massage for deep, penetrating massage
- water level sensor
- protection against pump dry running
- total water drainage after bathing

Air massage

- unique system of air channels in the bathtub
- air blower with built in 300w temperature maintenance heater
- automatic ozonation of water
- electronic regulation of air massage intensity
- programmed pulsating air massage
- total water drainage from the air massage system after bathing
- automatic drying of the air massage systems after bathing
- automatic blowing/drying of air channels every 24 hours

The setting of maximum time of bath 30 min

Chromotherapy

- unique multi-coloured lighting programs to enhance bathing and health benefits

Systems available on all models excluding KLIO, KLIO SYM & KLIO ASYM

EFFECTS

A new hydromassage system, EFFECTS, combines water and air massage and chromotherapy in three revolutionary hydromassage programmes:



skinBEAUTY

- shapes figure
- makes skin smooth, perfectly moisturised and capable to assimilate more oxygen.



bodyREGENERATION

- Regain muscles and vital force



proRELAXATION

- Gives perfect relaxation
- Regenerates mind and soul

Electronic Control

- 3 laser printed icons, highlighted with LED diodes
- Touch of any icon starts one of advanced hydromassage programme
- Temperature display (laser printed) with colourful LEDs, indicating water temperature in bathtub
- Water massage
- Air massage
- Chromotherapy: single point multicolour underwater LED light

15-minute programme skinBEAUTY

The first stage of the bath is water massage of a medium and then high intensity that loosens your muscles. After a while, air massage with ozonation turns on – it gradually increases its intensity. It is the base of “skinBEAUTY” programme – it improves your skin blood flow, tightens it and makes it firm, reducing wrinkle depth, cellulite and stretch marks. The light colour changes from delicate violet to stimulating red.

In the next stage, ozone air massage (pearl bath) enters the modulated mode – high intensity at the beginning changing into smaller one. After a short break, an intensive water massage starts again, decreasing its intensity after a few minutes. Light colour changes into vitalising yellow. At the end both massage types enter the constant mode of medium intensity. Light colour changes into relaxing blue. Composition of skinBEAUTY treatments gradually shapes your figure and makes your skin smooth, perfectly moisturised and capable to assimilate more oxygen.

20-minute programme bodyREGENERATION

The bath begins with a modulated air massage and water massage of medium intensity. Red light helps stimulate your body for intensive regeneration. During the next stage, the intensity of both massages is increased to maximum; water massage, which is the quintessence of “bodyREGENERATION” programme, enters the pulse mode, imitating a masseur’s movements. Rapidly changing colourful light stimulates blood flow, and after entering the gentle colour changing mode, the strong water streams loosens your muscles. After some time the massage type changes – air massage again enters a more gentle mode and water massage intensity level is set as a higher intensity.

At the same time, the lighting changes into yellow which restores your vital force and at the end it takes on the shade of an energetic orange. The programme finishes with a few minutes of combined water and air massage of high intensity which regain both thanks to which you will regain muscle and joint fitness as well as vital energy.



10-minute programme proRELAXATION

The first stage of the bath is air massage of constant high intensity which is reinforced by an intensive water massage. Tense muscles loosen and calming blue light takes your mind into a state of deep relaxation. A few minutes later water massage stops and a relaxing pearl bath becomes less intensive and enters the modulated mode. Gentle green light touches your senses and helps you regain inner harmony and balance.

After a few minutes of calming and relaxation, loosening intensive water massage turns on for a moment - it disappears when the light mode changes into revitalising yellow.

“proRELAXATION” programme ends with a few minutes session in water and air streams of constant moderate intensity. It favours inner silence and calming of your body and the orange light gives you a new lease on life when you finish this relaxing massage programme.

Equipment of Effects System

Electronic control

3 laser printed icons on the bathtub (Pro Relaxation, Skin Beauty, Body Regeneration), all icons are highlighted by colourful LED's

Temperature display with colourful LED's showing water temperature in the bathtub

Hydromassage

- rotational back massage jets
- rotational foot massage jets (for baths with round style jets)
- directional foot massage jets (for baths with square style jets)
- fully adjustable/directional side massage jets allow you to personalize your massage
- ‘air venturi’ allows you to regulate the intensity of the massage via back, foot and side jets
- water level sensor
- protection against pump dry running
- total water drainage after bathing

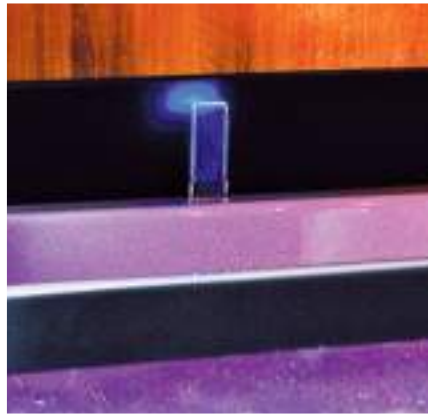
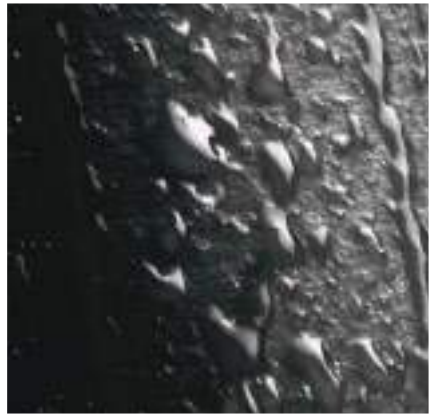
Air massage

- unique system of air ducts in the bathtub
- air blower with air 300w temperature maintenance heater
- automatic ozonation of water
- total drainage of the air massage system after bathing
- automatic drying of air massage system after bathing

Chromotherapy

- single-point multicolour underwater diode lights







Quality

Only official Pool Spa retailers are allowed to display and sell a Pool Spa product. With the necessary skills, product know-how and specialist team, they guarantee the quality of each and every component of your Pool Spa, helping you to make the choice of a lifetime.

This catalogue comprises of a small selection of the Pool Spa luxury baths and further product lines encompassing designer showering, Spas and Hot Tubs.

Visit poolspace.pl and explore more

Contact the UK office to find an official dealer





Luxury Bathroom Solutions Ltd

Unit 12 Delta Court
Sky Business Park
Robin Hood Airport
Doncaster
South Yorkshire
DN9 3GN

T: 0844 877 0570

F: 0844 877 0580

www.luxurybathroomsolutions.co.uk

The sole importer for the UK, Eire & Channel Islands for Pool Spa