



SHOWER TRAYS

CUSTOM TOUCH

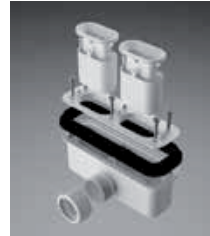
CUSTOM
is the shower tray:



1

AESTHETIC and FUNCTIONAL

The thickness is only 3.5 cm and the new waste system of 50 l/min, allows installations in support or flush floor, for maximum aesthetics and use.



Drain with exhaust flow 50 litres / minute with drain cover plate chromed stainless steel as standard

2

ADAPTABLE

Shapeable to adapt to all architectural needs and available in 6 finishes and colors.

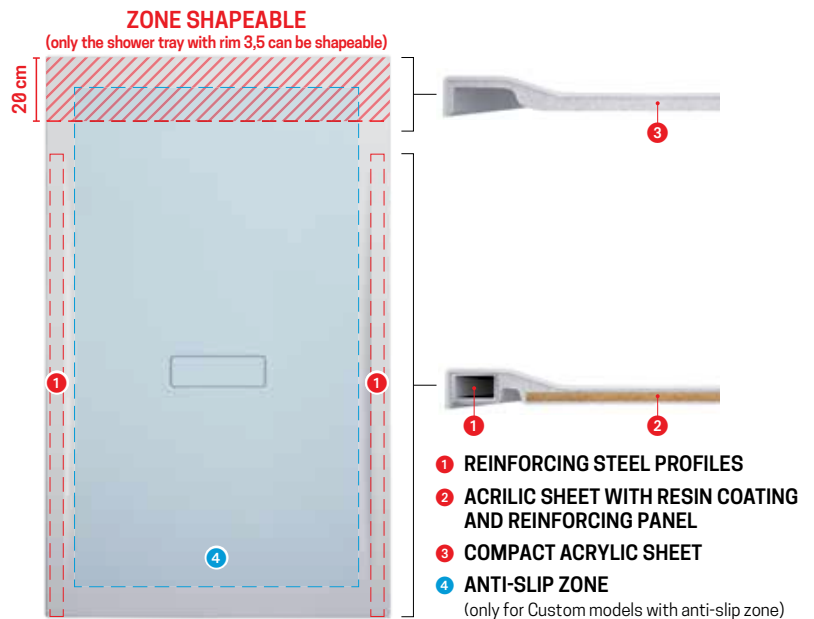


SHOWER TRAYS

3

SOLID and LIGHT

Steel bars run along the profiles of the plate for maintaining optimal flatness in any installation.

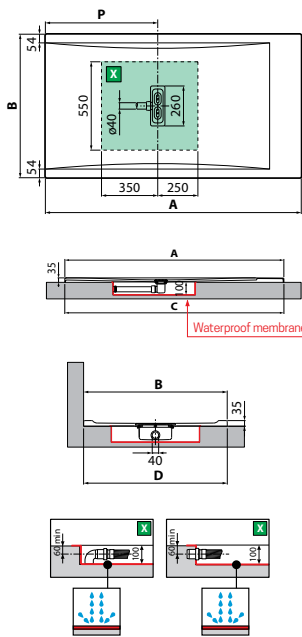


CUSTOM TOUCH

STANDING ON FLOOR
BORDE 3,5 CM



Soft white Beige Corda Grey Matt Black



X Embedded in the floor area for unloading H 100

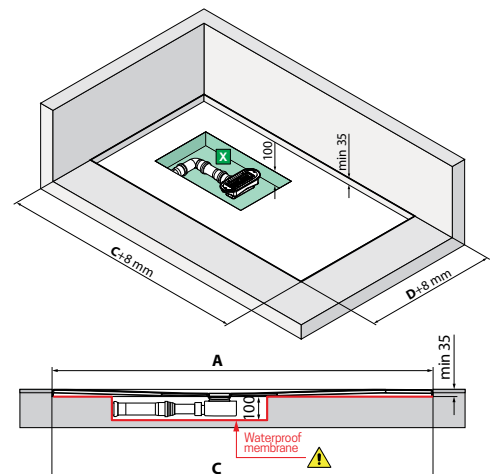
Dimensions				Code	Select the finishing / price				
AxB *	CxD **	P			79	11	27	29	28
± 2 mm	± 3 mm				Soft White	Beige	Corda	Grey	Black
100 x 80	994 x 792	996 x 794	400	CT100804-					
120 x 70	1194 x 692	1196 x 694	500	CT120704-					
120 x 80	1194 x 792	1196 x 794	500	CT120804-					
120 x 90	1194 x 892	1196 x 894	500	CT120904-					
120 x 100	1194 x 992	1196 x 994	500	CT120104-					
140 x 70	1392 x 692	1394 x 694	600	CT140704-					
140 x 80	1392 x 792	1394 x 794	600	CT140804-					
140 x 90	1392 x 892	1394 x 894	600	CT140904-					
160 x 70	1592 x 692	1594 x 694	700	CT160704-					
160 x 80	1592 x 792	1594 x 794	700	CT160804-					
160 x 90	1592 x 892	1594 x 894	700	CT160904-					
180 x 80	1792 x 792	1794 x 794	800	CT180804-					
180 x 90	1792 x 892	1794 x 894	800	CT180904-					

* Measurements of the upper part of the plate
** Measurements of the tray by floor

INSTALLATION FLUSH FLOOR



ONLY FOR RIM 3,5 CM



CUSTOM TOUCH

STANDING ON FLOOR
BORDE 12 CM



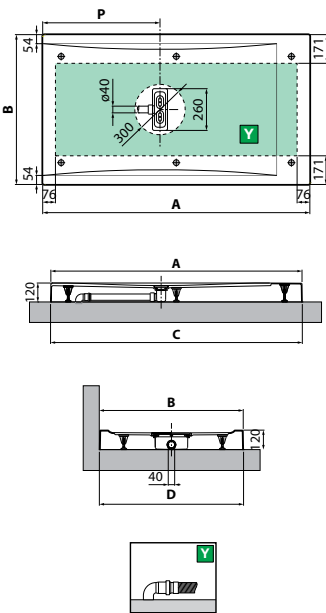
Soft white

Beige

Corda

Grey

Matt Black




Y The area available for unloading above the floor

Dimensions		Code	Select the finishing / price				
AxB *	CxD **	P	79	11	27	29	28
± 2 mm	± 3 mm		Soft White	Beige	Corda	Grey	Black
100 x 80	994 x 792	1000 x 798 400					
120 x 70	1194 x 692	1200 x 698 500					
120 x 80	1194 x 792	1200 x 798 500					
120 x 90	1194 x 892	1200 x 898 500					
120 x 100	1194 x 992	1200 x 998 500					
140 x 70	1392 x 692	1398 x 698 600					
140 x 80	1392 x 792	1398 x 798 600					
140 x 90	1392 x 892	1398 x 898 600					
160 x 70	1592 x 692	1598 x 698 700					
160 x 80	1592 x 792	1598 x 798 700					
160 x 90	1592 x 892	1598 x 898 700					
180 x 80	1792 x 792	1798 x 798 800					
180 x 90	1792 x 892	1798 x 898 800					

* Measurements of the upper part of the plate
** Measurements of the tray by floor


OPTIONAL



KIT OF 2 PLASTIC FINISHING PROFILES 195 CM

Code	Price
PRVA195-30	

REQUIRED



Compulsory Imperial to Metric flex waste adaptor

Code	Price
RISCCAB	

Construction of the code: Code + Colour = Final product code