

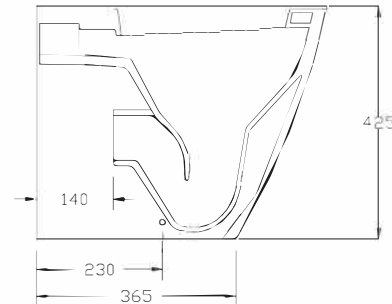
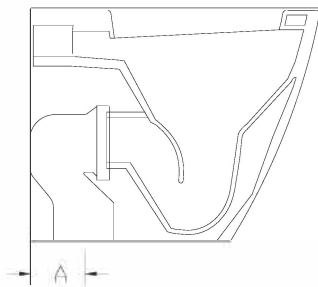
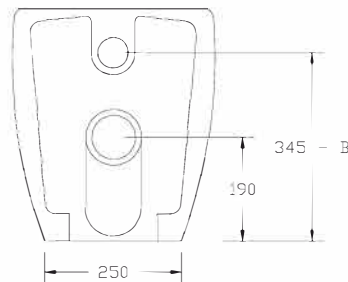
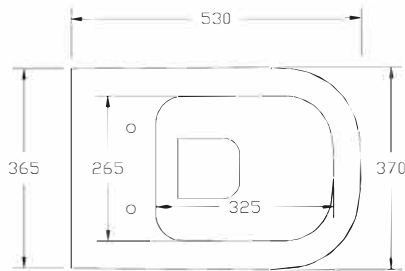
### WC TERRA TRASLATO

*Back to wall WC* With adjustable Water Inlet/outlet



DOP 997

TRASLATO  
ADJUSTABLE FLUSHING



| A | CURVE SCARICO PAVIMENTO<br>VERTICAL OUTLET PLASTIC PIPE |                 |                 |
|---|---|-----------------|-----------------|
|   | P59   | P57             | P60             |
|   | DA 60 A 110   | DA 120 A 150    | DA 160 A 200    |
|   | FROM 60 TO 110  | FROM 120 TO 150 | FROM 160 TO 200 |
|   |   |                 |                 |

| B          | RACCORDO<br>CARICO ACQUA<br>/ PIPE INLET WATER |
|------------|--|
|            | <b>P61</b>                                     |
| 325 o 365  |  |
| 325 or 365 |  |
|            |  |

#### ATTENZIONE:

Le misure possono subire delle variazioni, dovute ad usura stampi e a variazioni delle caratteristiche delle materie prime che compongono l'impasto. Hidra si riserva il diritto di apportare in qualsiasi momento modifiche tecniche, costruttive e dimensionali utili al miglioramento della produzione. Consultare [www.hidra.it](http://www.hidra.it) per eventuali aggiornamenti.

#### ATTENTION:

Size could change for the use of the moulds or for the changes of first material used in the mixture. Hidra reserves the right to make at any time technical, construction and dimensional changes, useful to improve production. Consult [www.hidra.it](http://www.hidra.it) for updates