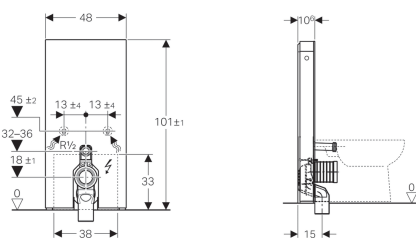


Geberit Monolith Plus sanitary module for floor-standing WC, 101 cm



Example image



Application purposes

- For floor inlets
- For renovations, conversions and new buildings
- For wall inlets with an inlet height of 18 cm
- For floor-standing WCs with P-bend and water inlet height 32–36 cm above the floor (EN 33)
- For replacing low-level exposed cisterns
- For replacing floor-standing WCs with close-coupled exposed cistern
- For connecting Geberit AquaClean Sela floor-standing WC
- For connecting Geberit AquaClean Tuma WC complete solution, floor-standing WC
- For connecting Geberit AquaClean WC enhancement solutions, with accessories
- For mounting on finished floors
- For installation in front of drywalls or solid walls

Characteristics

- Dual flush
- Compensation of dimensional tolerances possible
- Front cladding made of glass (ESG)
- Cistern, fully insulated against condensation
- Side cladding made of aluminium brushed
- Self-supporting
- Adjustable flush volume
- Soft-touch buttons for flush actuation and odour extraction
- Orientation light and odour extraction activated when a user approaches
- Orientation light can be set in seven colours
- User detection range can be set
- Day/night detection can be set for orientation light
- Odour extraction unit with ceramic honeycomb filter can be installed without tools
- Ceramic honeycomb filter for odour neutralisation can be replaced without tools

- Odour extraction unit automatically switches off after a predefined running time
- Operation with extra-low voltage, no mains voltage in cistern
- Mains connection with flexible three-wire sheathed cable
- Water supply connection on the bottom
- Water supply connection on the left/right possible with accessories

Technical data

Protection class	I
Protection degree	IPX4
Nominal voltage	100-240 V AC
Mains frequency	50-60 Hz
Operating voltage	4.1 V DC
Power consumption	5 W
Flow pressure	0.1-10 bar
Maximum operating temperature, water	25 °C
Flush volume	6 l
Flush volume small	3 l

Scope of delivery

- Water supply connection set with 2 angle stop valves, 1/2"
- Flush bend extension 160 mm
- Sleeve made of EPDM, \varnothing 44 / 55 mm
- Connection bend made of PP, \varnothing 90 mm
- Adaptor socket made of PE-HD, \varnothing 90 / 110 mm
- Female socket for mains connection
- Power supply unit
- Base cover
- Fastening material for drywall
- Fastening material

Art. no.	Colour / surface	B	H	T
131.202.SI.5	white / glass	48 cm	101 cm	10.6 cm
131.202.SJ.5	black / glass	48 cm	101 cm	10.6 cm
131.202.TG.5	sand / glass	48 cm	101 cm	10.6 cm
131.202.SQ.5	umber / glass	48 cm	101 cm	10.6 cm

Accessories

- Lateral water supply connection set for Geberit Monolith sanitary module for WC
- Geberit outlet mounting box
- Conversion set for Geberit AquaClean WC enhancement solutions



- Glass thickness 8 mm