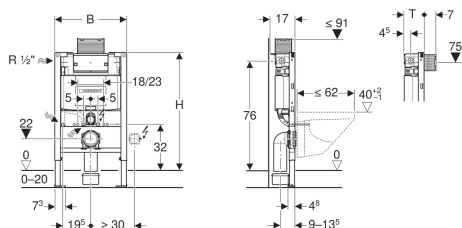


Geberit Duofix frame for wall-hung WC, 82 cm, with Omega concealed cistern 12 cm



Example image



Application purposes

- For drywall construction
- For installation in part-height prewall installations
- For installation in part-height Geberit Duofix system walls
- For wall-hung WCs with connection dimensions in accordance with EN 33:2011
- For wall-hung WCs with projection up to 62 cm
- For dual flush
- For floor constructions 0–20 cm

Characteristics

- Self-supporting frame, powder-coated
- Frame with \varnothing 9 mm drilling holes for fastening in wood frame construction
- Frame prepared for support brackets for WC ceramic appliances with small contact surfaces
- Galvanized feet
- Feet adjustable 0–20 cm
- Non-slip leg supports
- Rotatable foot plates
- Foot plate depth suitable for installation in U-profiles UW 50 and UW75 and Geberit Duofix system rails
- Connection bend can be mounted without tools at different depths, adjustable range 45 mm
- Fastening for connection bend, sound-absorbing
- Concealed cistern with top or front actuation
- Concealed cistern, fully insulated against condensation
- Cistern fulfils standard requirements in accordance with EN 14055, Class II
- Immediate post flush possible with factory setting
- Tool-free installation and maintenance work on concealed cistern

- Water supply connection on the left or rear left
- Protection cover box for service opening protects against moisture and dirt
- Protection box for service opening can be cut to length
- Equipped with conduit pipe for feed pipe for connection of Geberit AquaClean shower toilets
- With fastening option for electrical connection

Technical data

Flow pressure	0.1-10 bar
Maximum operating temperature, water	25 °C
Flush volume, factory setting	5.8 and 3 l
Flush volume large, adjustment range	4.5 / 6 / 7.5 l
Flush volume small, adjustment range	3-4 l
Calculated flow rate	0.11 l/s
Minimum flow pressure for calculated flow rate	0.5 bar

Scope of delivery

- Water supply connection Rp 1/2" - R 1/2", compatible with MF, with integrated angle stop valve and hand wheel
- Protection box for service opening
- 2 wall anchors
- Connection set for WC, \varnothing 90 mm
- Connection bend 90° made of PE-HD, \varnothing 90 mm
- Adaptor socket made of PE-HD, \varnothing 90 / 110 mm
- 2 protection plugs
- Cup for flush volume reduction 4.0 / 2.6 l
- 2 threaded rods M12
- Fastening material

Art. no.	B	H	T
111.004.00.1	50 cm	82 cm	14 cm

Accessories

- Geberit set of support brackets for WC ceramic appliances with small contact surfaces
- Geberit Duofix set of wall anchors for single installation
- Geberit Duofix set of wall anchors for single and system installation
- Geberit Duofix foot fastener set on rear wall
- Geberit Duofix set of foot extensions for floor construction 20–40 cm
- Geberit Duofix set of leg supports with large foot plate
- Geberit concealed outlet for drywall and solid wall construction



- Any boarding must be fixed tight up against the face of the Duofix frame and screwed directly to the frame
- The cistern can be operated with used water (rainwater) provided it is passed through a filter system first
- Flush valve features settings to enable either a 6 l and 3 l flush or a 4.5 l and 3 l flush. Note: must be used with pans designed for low volume flush