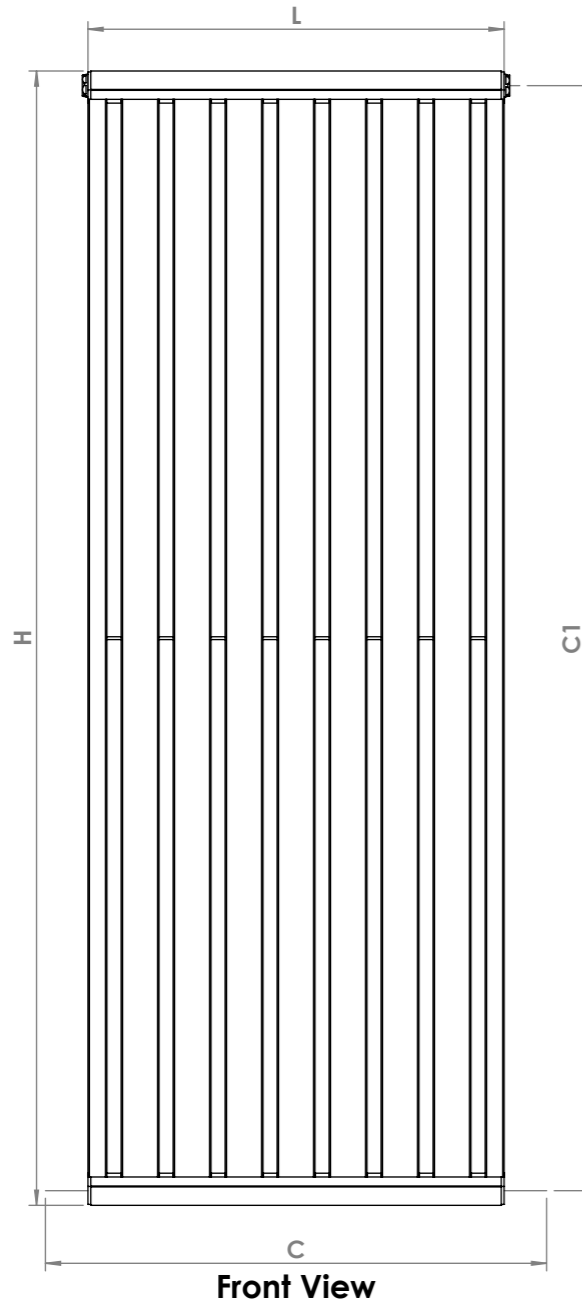
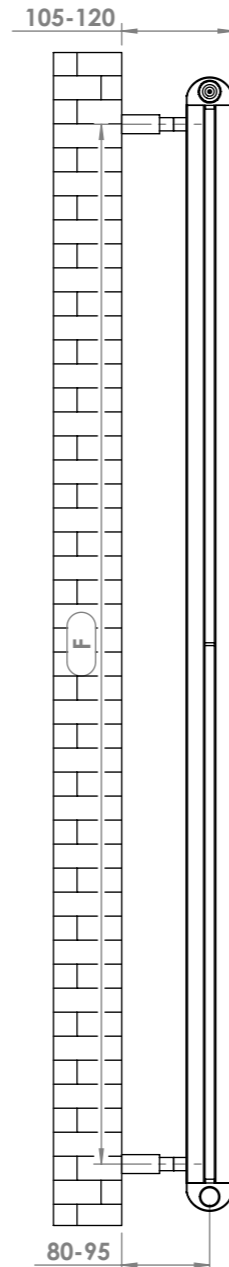


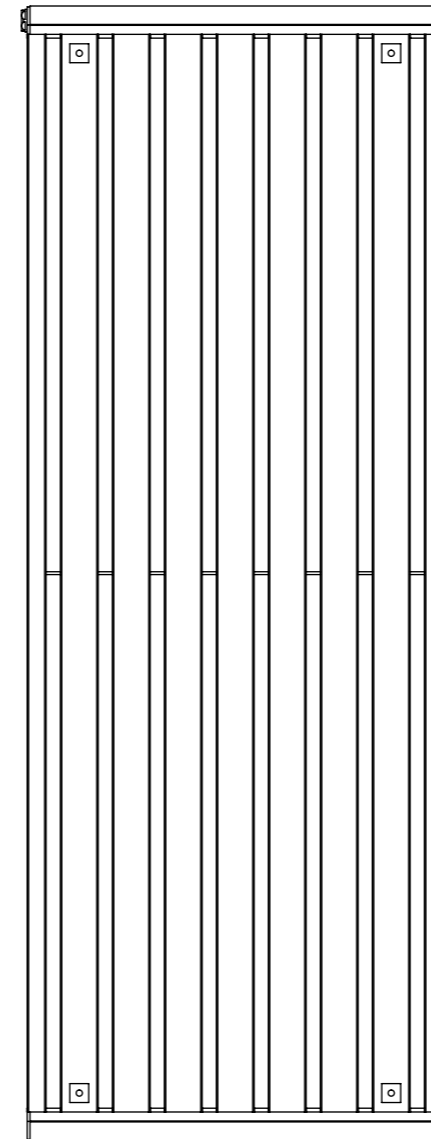
Luxury Bathroom Solutions *SUPRA - Double*



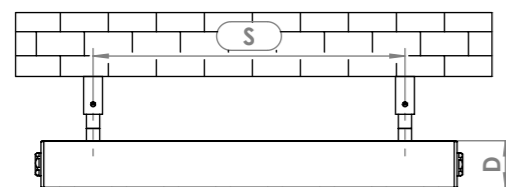
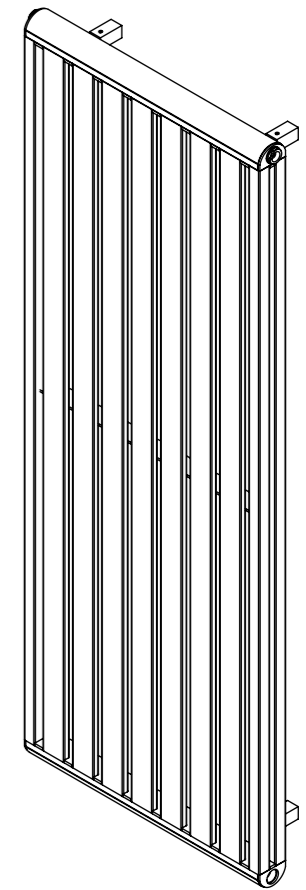
Front View



Side View

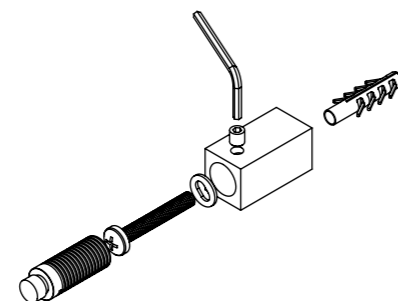
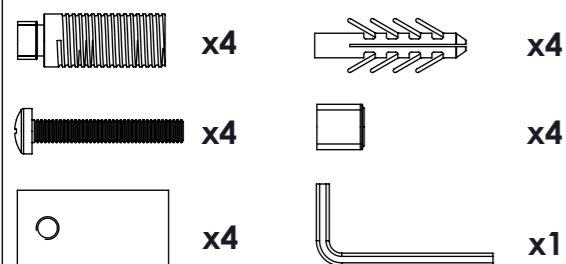


Back View



Top View

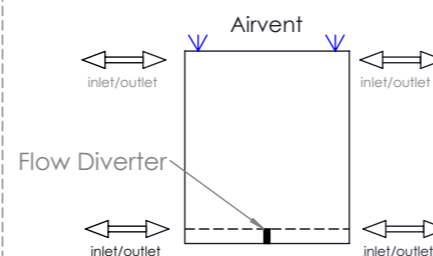
Installation Accessories:



When mounting vertically, please observe that the collector fitted with a flow diverter is mounted at the bottom. This can be verified by visually checking or by referring to the installation diagram

When mounting horizontally, please knock through the centre hole of the diverter using a suitable rod. Please remove the disk if it comes loose and can be removed from a tapping

Plumbing Position:



Vertical / Horizontal Mount
 All Dimensions are in mm
 Max. Working Pressure: 10 Bar
 Max. Working Temperature: 120° C
 Inlet / Outlet : 1/2" BSP
 Fuel : H & E/H/D

Manufacturing Tolerance : - 5 mm

Height H mm	Length L mm	Depth D mm	Pipe Centres C-C1 mm	Bracket Centres		Heat Output	
				F mm	S mm	BTU	Watts
450	550	50	640-420	350	440	2432	712
450	660	50	750-420	350	550	2910	852
450	770	50	860-420	350	660	3385	991
450	880	50	970-420	350	770	3863	1131
600	440	50	530-570	500	330	2606	763
600	550	50	640-570	500	440	3241	949
600	660	50	750-570	500	550	3877	1135
600	770	50	860-570	500	660	4512	1321
800	440	50	530-770	700	330	3518	1030
800	550	50	640-770	700	440	4375	1281
800	660	50	750-770	700	550	5233	1532
1000	330	50	420-970	900	220	3286	962
1000	440	50	530-970	900	330	4348	1273
1000	550	50	640-970	900	440	5407	1583
1000	660	50	750-970	900	550	6466	1893
1200	220	50	310-1170	1100	110	2671	782
1200	330	50	420-1170	1100	220	3945	1155
1200	440	50	530-1170	1100	330	5216	1527
1200	550	50	640-1170	1100	440	6490	1900
1200	660	50	750-1170	1100	550	7760	2272
1500	220	50	310-1470	1400	110	3340	978
1500	330	50	420-1470	1400	220	4929	1443
1500	440	50	530-1470	1400	330	6520	1909
1500	550	50	640-1470	1400	440	8112	2375
1800	220	50	310-1770	1700	110	4006	1173
1800	330	50	420-1770	1700	220	5912	1731
1800	440	50	530-1770	1700	330	7818	2289
1800	550	50	640-1770	1700	440	9728	2848
2000	220	50	310-1970	1900	110	4454	1304
2000	330	50	420-1970	1900	220	6572	1924
2000	440	50	530-1970	1900	330	8682	2542
2000	550	50	640-1970	1900	440	10814	3166